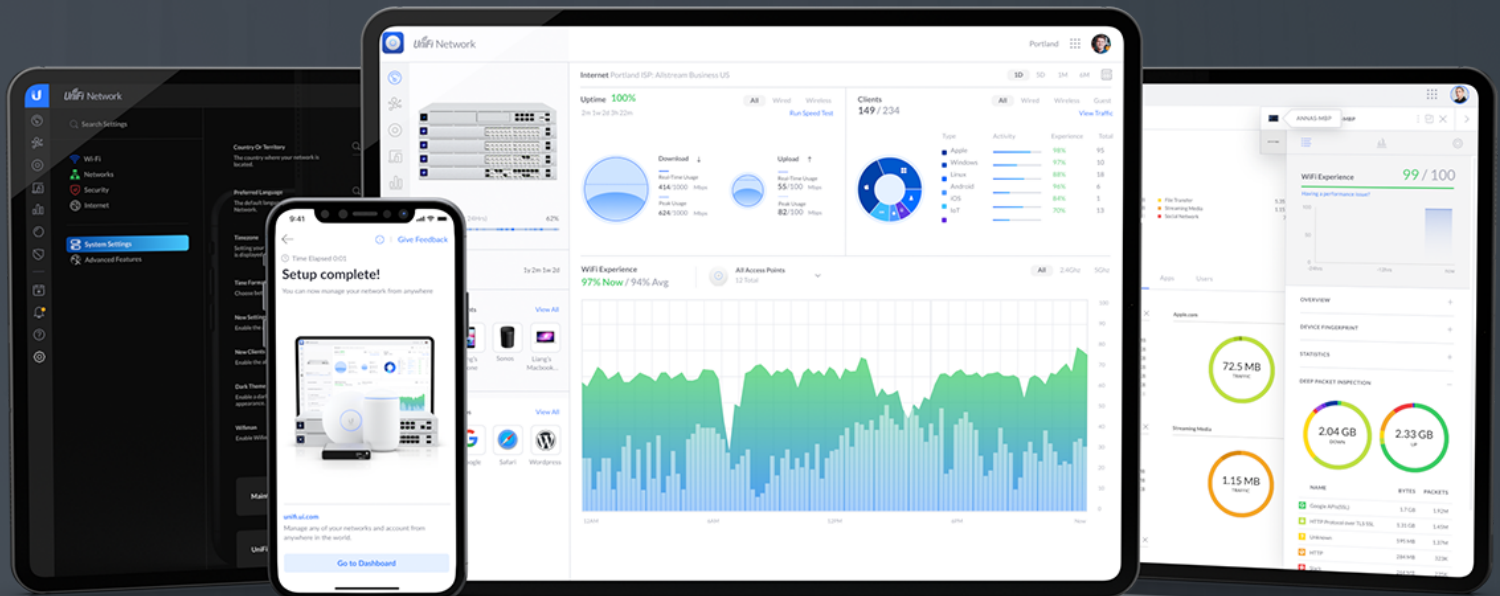


UniFi® Network



Access Point WiFi 6 In-Wall

Wall-mounted WiFi 6 access point with a 300-client capacity and a built-in Gigabit, PoE switch.

The Access Point WiFi 6 In-Wall (U6 IW) is a dual-band, wall-mounted access point with (4) GbE RJ45 ports that brings plug-and-play WiFi 6 to your home or office. One of the U6 IW's ports also supports 802.3af PoE output so you can connect and power an Ethernet device. With its 2.4 and 5 GHz WiFi 6 bands, the U6 IW offers an aggregate, over-the-air throughput rate of 5.3 Gbps, which can support over 300 clients. The U6 IW is also Bluetooth-compatible so it can be set up in minutes and managed from anywhere via the UniFi Network web application or mobile app.



Mechanical

Dimensions	139.66 x 96 x 31.19 mm (5.5 x 3.78 x 1.28")
Weight	460 g (1.01 lb)
Enclosure materials	Plastic, aluminum
Mount material	Aluminum

Hardware

Management interfaces	Ethernet Bluetooth	
Networking interfaces	(1) Data-in: 1GbE RJ45 port (4) Data-out: 1GbE RJ45 ports	
PoE interfaces	(1) PoE in 802.3af (PoE output not used) (1) PoE out 802.3af (requires a PoE+ switch)	
Button	Factory reset	
LED	White/blue	
Power method	802.3af PoE	
Power supply	UniFi PoE switch 48V, 0.5A PoE adapter (optional)	
Max. power consumption	Excluding PoE output: 13.5W	
Max PoE wattage per port by PSE	15.4W* <small>*Requires a PoE+ switch</small>	
Voltage range 802.3af mode	44 to 57VDC	
Max. TX power	2.4 GHz	22 dBm
	5 GHz	26 dBm
MIMO	2.4 GHz	2 x 2 (UL MU-MIMO)
	5 GHz	4 x 4 (DL/UL MU-MIMO)
Throughput rate	2.4 GHz	573.5 Mbps
	5 GHz	4.8 Gbps
Antenna gain	2.4 GHz	5 dBi
	5 GHz	5.9 dBi
Operating temperature	-30 to 60° C (-22 to 140° F)	
Operating humidity	5 - 95% noncondensing	
Certifications	CE, FCC, IC	



Software

WiFi standards	802.11a/b/g WiFi 4/WiFi 5/WiFi 6
Wireless security	WPA-PSK, WPA-Enterprise (WPA/WPA2/WPA3)
BSSID	8 per radio
VLAN	802.1Q
Advanced QoS	Per-user rate limiting
Guest traffic isolation	Supported
Concurrent clients	300+
Zero-wait DFS	Yes

Supported Data Rates

802.11a	6, 9, 12, 18, 24, 36, 48, 54 Mbps
802.11b	1, 2, 5.5, 11 Mbps
802.11g	6, 9, 12, 18, 24, 36, 48, 54 Mbps
802.11n (WiFi 4)	6.5 Mbps to 600 Mbps (MCS0 - MCS31, HT 20/40)
802.11ac (WiFi 5)	6.5 Mbps to 3.4 Gbps (MCS0 - MCS9 NSS1/2/3/4, VHT 20/40/80/160)
802.11ax (WiFi 6)	7.3 Mbps to 4.8 Gbps (MCS0 - MCS11 NSS1/2/3/4, HE 20/40/80/160)



Specifications are subject to change. Ubiquiti products are sold with a limited warranty described at www.ui.com/support/warranty

©2021 Ubiquiti Inc. All rights reserved. Ubiquiti, Ubiquiti Networks, the Ubiquiti U logo, the Ubiquiti beam logo, UniFi, and UniFi Network are trademarks or registered trademarks of Ubiquiti Inc. in the United States and in other countries. All other trademarks are the property of their respective owners.