

ER-10X Quick Start Guide



Click for
Table of Contents



tents



EdgeRouter ER-10X



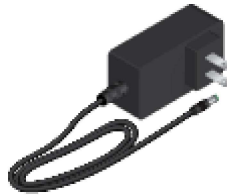
Wall Mount Screws (Qty. 2)



Wall Mount Anchors (Qty. 2)



Ground Screw



Power Adapter (24V, 1A)



Cable Clip

Installation Requirements

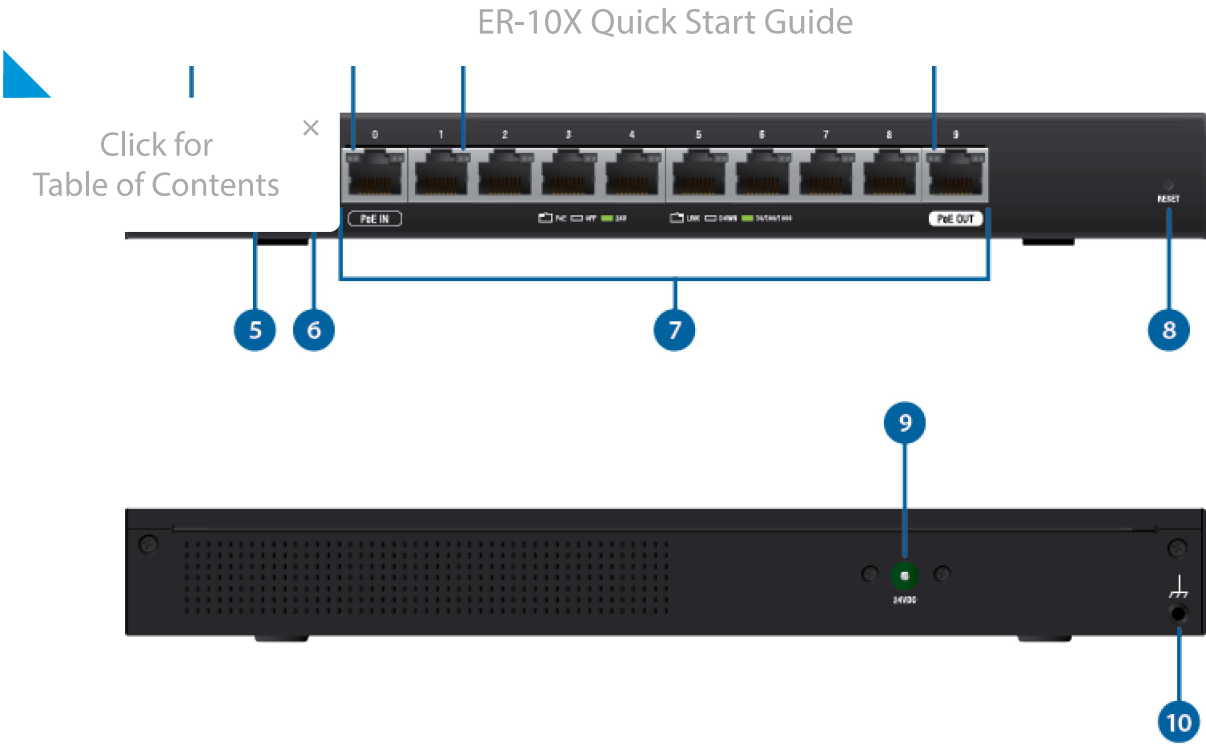
- Wall-mounting (optional)
 - Drill with 6 mm drill bit
 - Phillips screwdriver
- For indoor applications, use Category 5 (or above) UTP cabling approved for indoor use.
- For outdoor applications, shielded Category 5 (or above) cabling should be used for all wired Ethernet connections and should be grounded through the AC ground of the power supply.

We recommend that you protect your networks from harmful outdoor environments and destructive ESD events with industrial-grade, shielded Ethernet cable from Ubiquiti. For more details, visit: ui.com/toughcable



Note: Although the cabling can be located outdoors, the EdgeRouter itself should be housed inside a protective enclosure.

Hardware Overview



1 System LED	
Flashing White	Bootup in Progress
White	Ready for Use Not Connected to Ubiquiti® Network Management System (UNMS™)
Blue	Ready for Use Connected to UNMS
Steady Blue with Occasional Flashing	Ready for Use Unable to Connect to UNMS
Quickly Flashing Blue	Used to Locate a Device in UNMS
Alternating Blue/White	Firmware Upgrade in Progress
2 RJ45 PoE LED (Port 0)	
Off	No PoE
Green	24V Passive PoE Input
3 RJ45 Speed/Link/Activity LED (Ports 0 - 9)	
Off	No Link

ER-10X Quick Start Guide	
Flashing indicates Activity	
Click for Table of Contents	
Port 9)	
Off	No PoE
Green	24V 2-Pair Passive PoE Output
5 Console	
RJ45 serial console port for Command Line Interface (CLI) management.	
6 USB	
Reserved for future use.	
7 RJ45 (Ports 0 - 9)	
All RJ45 ports can be used for routing and support 10/100/1000 Mbps Ethernet connections. Ports 0 - 9 can be configured for switching functions using the EdgeOS® Configuration Interface.	
<ul style="list-style-type: none">• PoE In (Port 0) Supports 24V Passive PoE input.• PoE Out (Port 9) Supports optional 24V Passive PoE passthrough (disabled by default).	
8 Reset Button	
Click here to learn how to reset an EdgeRouter to factory defaults.	
9 Power	
Connect the included Power Adapter to the Power port.	
10 Grounding Point	
Ground bonding point for an optional ground wire.	

Hardware Installation

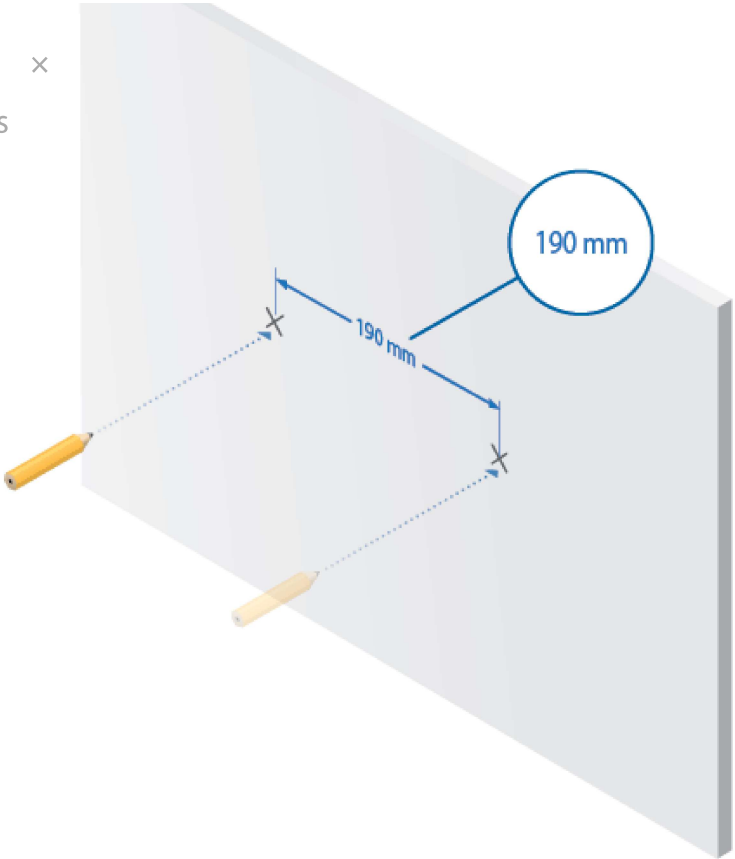
Wall Mounting

1.

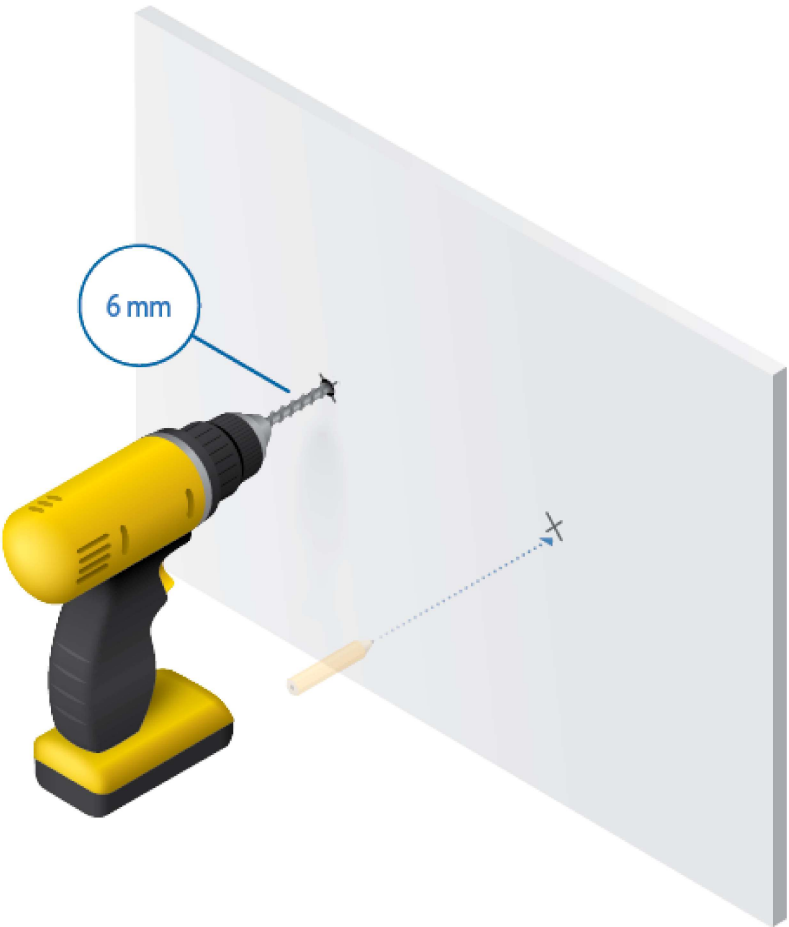
ER-10X Quick Start Guide



Click for
Table of Contents



2.



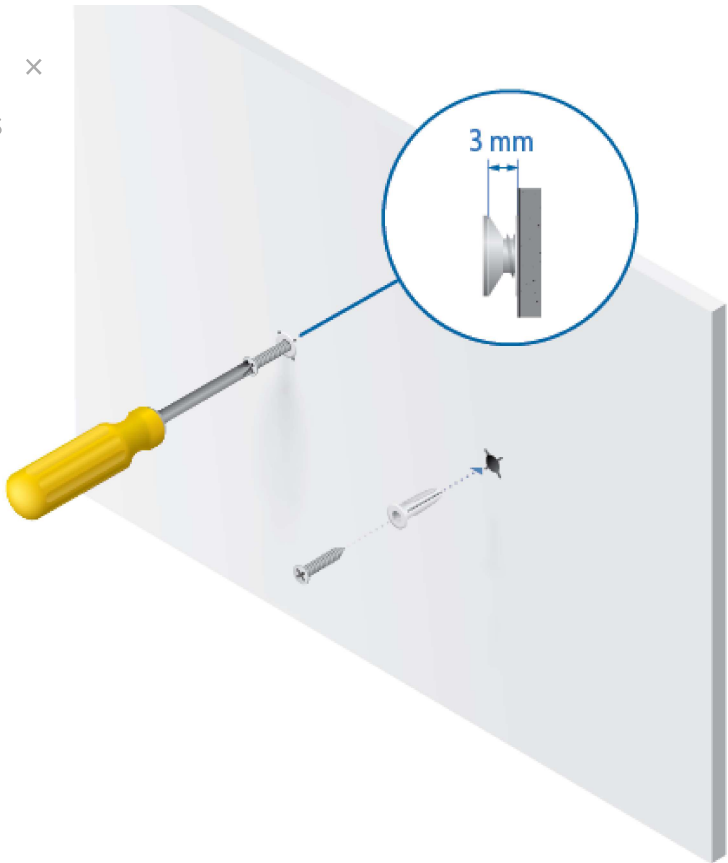
3.

ER-10X Quick Start Guide



Click for
Table of Contents

×



4.



Grounding the EdgeRouter (Recommended)

ER-10X Quick Start Guide



Click for
Table of Contents



Optional

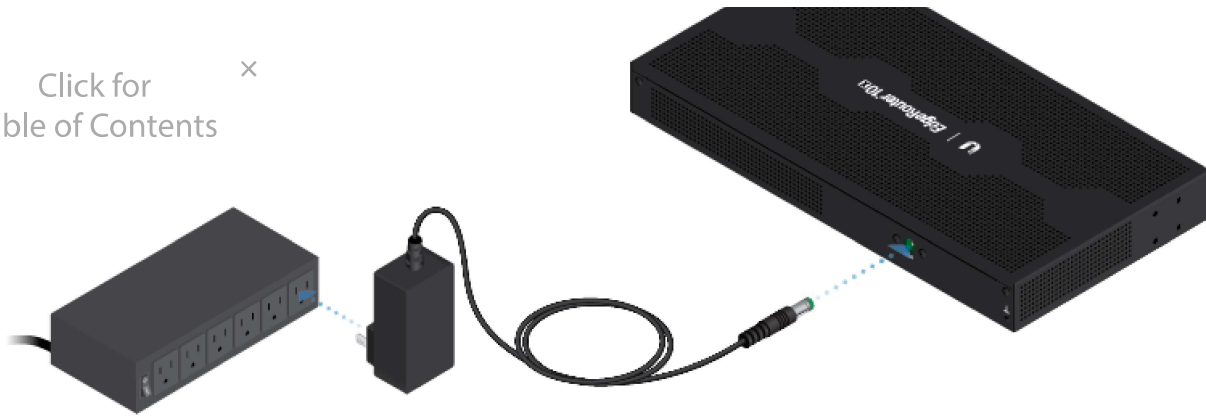


Connecting Power

ER-10X Quick Start Guide



Click for
Table of Contents



Accessing the EdgeOS Configuration Interface

The EdgeOS® configuration interface can be accessed via DHCP or static IP address assignment. By default, eth1 is set up as a DHCP client, while eth0 is assigned a static IP address of 192.168.1.1. To configure the EdgeRouter, proceed to the appropriate section: DHCP or [“Static IP Address”](#).

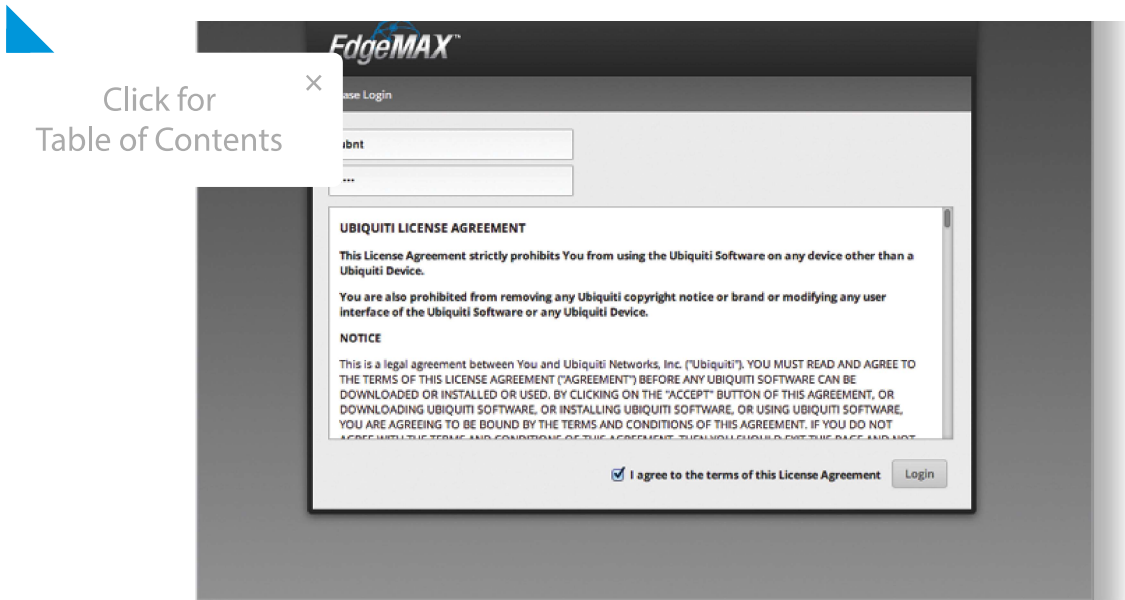
DHCP

1. Connect an Ethernet cable from eth1 on the EdgeRouter to a LAN segment that has an existing DHCP server.



2. To check the IP address of the EdgeRouter, use one of the following methods:
 - Set up the DHCP server to provide a specific IP address to the EdgeRouter based on its MAC address (on the label).
 - Let the EdgeRouter obtain an IP address and then check the DHCP server to see which IP address was assigned.
3. Launch your web browser. Enter the appropriate IP address in the address field. Press enter (PC) or return (Mac).
4. Enter ubnt in the Username and Password fields. Read the Ubiquiti License Agreement, and check the box next to I agree to the terms of this License Agreement to accept it. Click Login.

ER-10X Quick Start Guide



The EdgeOS Configuration Interface will appear, allowing you to customize your settings as needed. For more information, refer to the EdgeOS User Guide, which is available at ui.com/download/edgemax

For more information on PoE configuration, refer to [“Configuring PoE Settings”](#).

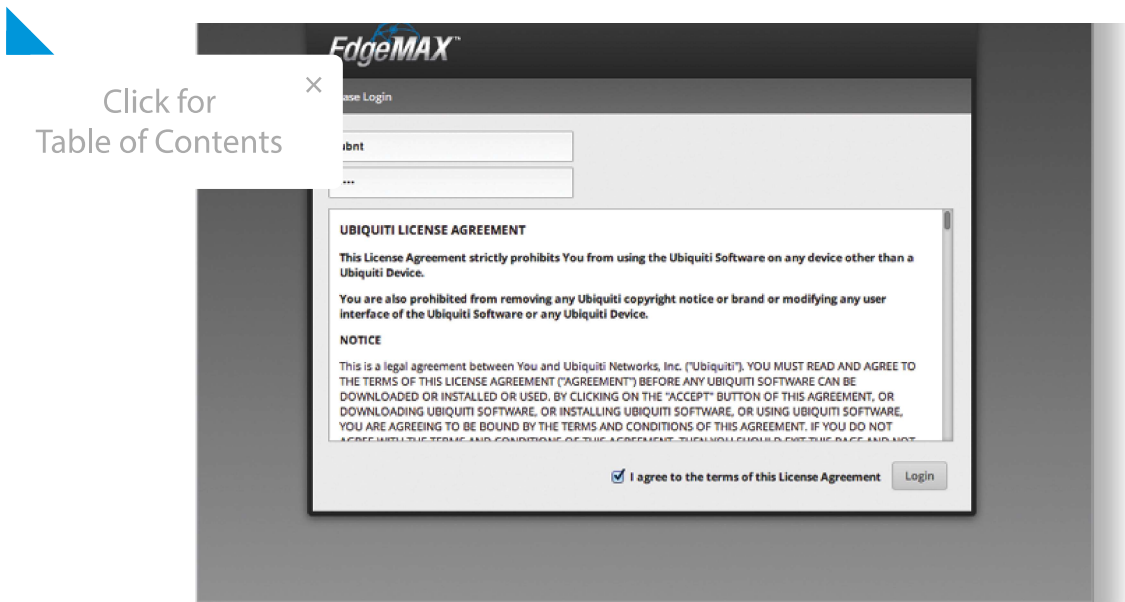
Static IP Address

1. Connect an Ethernet cable from the Ethernet port on your computer to the port labeled eth0 on the EdgeRouter.



2. Configure the Ethernet adapter on your host system with a static IP address on the 192.168.1.x subnet.
3. Launch your web browser. Type <https://192.168.1.1> in the address field. Press enter (PC) or return (Mac).
4. Enter ubnt in the Username and Password fields. Read the Ubiquiti License Agreement, and check the box next to I agree to the terms of this License Agreement to accept it. Click Login.

ER-10X Quick Start Guide



The EdgeOS Configuration Interface will appear, allowing you to customize your settings as needed. For more information, refer to the EdgeOS User Guide, which is available at ui.com/download/edgemax

For more information on PoE configuration, refer to [“Configuring PoE Settings”](#).

UNMS Management

You can manage your device using UNMS, which lets you configure, monitor, upgrade, and back up your devices using a single application. Get started at www.unms.com

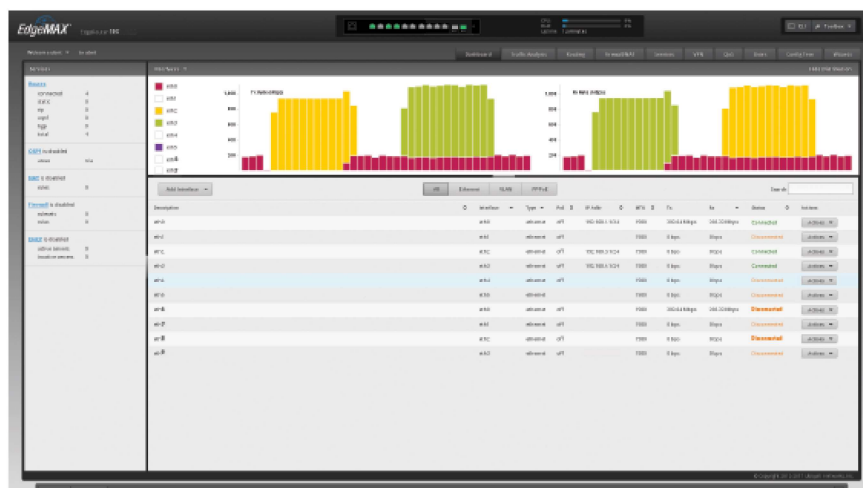
Configuring PoE Settings

The PoE setting for port 9 is set to Off by default.



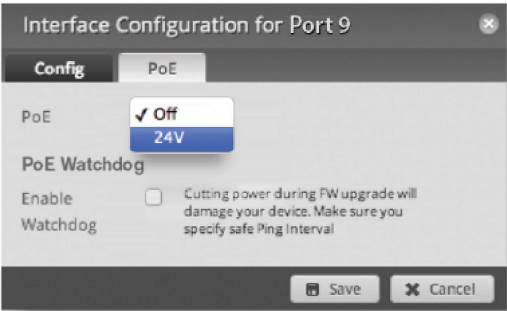
WARNING: Before activating PoE, ensure that the connected device supports passive PoE and the supplied voltage.

1. In the Dashboard tab, click Actions > PoE of the Ethernet port you want to configure.



ER-10X Quick Start Guide

Click for
Table of Contents



3. The Ethernet port's PoE LED will confirm the PoE setting.




For detailed instructions on configuring other features, please refer to the EdgeOS User Guide. The User Guide is available at ui.com/download/edgemax

Specifications

ER-10X	
Dimensions	268.1 x 136.5 x 31.1 mm (10.55 x 5.37 x 1.22")
Weight	600 g (1.32 lb)
Enclosure Characteristics	Metal Housing
Max. Power Consumption	8W (Excludes PoE Output)
Power Method	External AC/DC Power Adapter, 24W (24V, 1A) (Included) 24V Passive PoE
Power Supply	External AC/DC Adapter
Passive PoE	
Voltage Range	DC/PoE Passthrough
Max. Wattage per Port	15W (24V)
Supported Voltage Range	9 - 30VDC
Button	Reset
LEDs	
System	Booting Up (Blue), Powered On
RJ-45 Ports	Link / Activity, PoE
Processor	MIPS 1004Kc 880 MHz Dual-Core
System Memory	512 MB DDR3

ER-10X Quick Start Guide

 Click for Table of Contents	On-board Flash Storage	32 MB NAND
	Operating Temperature	-10 to 45° C (14 to 113° F)
	Humidity	10 - 90% Noncondensing
	ESD/EMP Protection	Air: ± 24 kV, Contact: ± 24 kV
Interfaces Management Networking		(1) RJ45 Serial Port (10) Ethernet Ports (Default Port 0) (10) 10/100/1000 RJ45 Ports Port 0 Supports PoE In; Port 9 Supports PoE Out
Certifications		CE, FCC, IC
PoE		
PoE Interfaces		
PoE In		(1) 24V Passive PoE Port, 2-pair (4, 5+; 7, 8-)
PoE Out		(1) 24V Passive PoE Port, 2-pair (4, 5+; 7, 8-)
Passive PoE Max. Wattage Per Port		15W (24V, 0.63A)
Passive PoE Output		DC/PoE Passthrough

Safety Notices

1. Read, follow, and keep these instructions.
2. Heed all warnings.
3. Only use attachments/accessories specified by the manufacturer.



WARNING: Failure to provide proper ventilation may cause fire hazard. Keep at least 20 mm of clearance next to the ventilation holes for adequate airflow.



WARNING: To reduce the risk of fire or electric shock, do not expose this product to rain or moisture.



WARNING: Do not use this product in location that can be submerged by water.

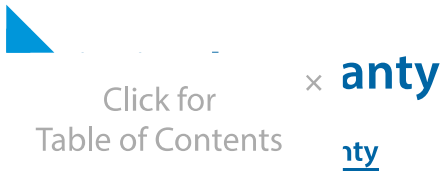


WARNING: Avoid using this product during an electrical storm. There may be a remote risk of electric shock from lightning.

Electrical Safety Information

1. Compliance is required with respect to voltage, frequency, and current requirements indicated on the manufacturer's label. Connection to a different power source than those specified may result in improper operation, damage to the equipment or pose a fire hazard if the limitations are not followed.

ER-10X Quick Start Guide



The limited warranty requires the use of arbitration to resolve disputes on an individual basis, and, where applicable, specify arbitration instead of jury trials or class actions.

Compliance

FCC

Changes or modifications not expressly approved by the party responsible for compliance could void the user's authority to operate the equipment.

This device complies with Part 15 of the FCC Rules. Operation is subject to the following two conditions.

1. This device may not cause harmful interference, and
2. This device must accept any interference received, including interference that may cause undesired operation.

This equipment has been tested and found to comply with the limits for a Class A digital device, pursuant to Part 15 of the FCC Rules. These limits are designed to provide reasonable protection against harmful interference when the equipment is operated in a commercial environment. This equipment generates, uses, and can radiate radio frequency energy and, if not installed and used in accordance with the instruction manual, may cause harmful interference to radio communications. Operations of this equipment in a residential area is likely to cause harmful interference in which case the user will be required to correct the interference at his own expense.

ISED Canada

CAN ICES-3(A)/NMB-3(A)

Australia and New Zealand



Warning: This equipment is compliant with Class A of CISPR 32. In a residential environment this equipment may cause radio interference.

CE Marking

CE marking on this product represents the product is in compliance with all directives that are applicable to it.



WEEE Compliance Statement

Declaration of Conformity

ER-10X Quick Start Guide



×

lrces

Click for

Table of Contents



© 2020 Ubiquiti Inc. All rights reserved.