

Package Contents



US-24

OR



US-48



Power Cord



Rack-Mount Brackets (Qty. 2)



Bracket Screws (Qty. 8)



Mounting Screws (Qty. 4)



Cage Nuts (Qty. 4)



Rubber Feet (Qty. 4)

Installation Requirements

- Phillips screwdriver
- Standard-sized, 19" wide rack with a minimum of 1U height available
- For indoor applications, use Category 5 (or above) UTP cabling approved for indoor use.
- For outdoor applications, shielded Category 5 (or above) cabling should be used for all wired Ethernet connections and should be grounded through the AC ground of the power supply.

We recommend that you protect your networks from harmful outdoor environments and destructive ESD events with industrial-grade, shielded Ethernet cable from Ubiquiti. For more details, visit: ui.com/toughcable



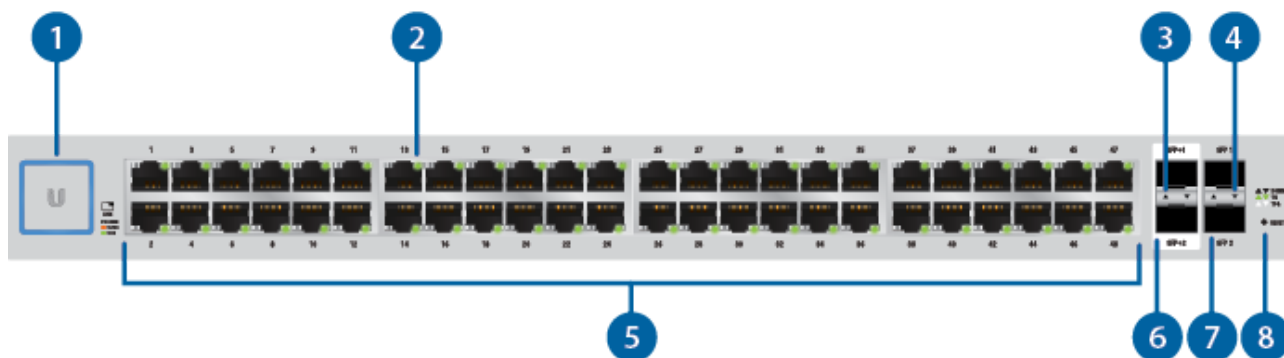
Note: Although the cabling can be located outdoors, the UniFi Switch itself should be housed inside a protective enclosure.

System Requirements

- Linux, Mac OS X, or Microsoft Windows 7/8/10

- UniFi Controller software v4.8.5 or newer (available at: ui.com/download/unifi)

Hardware Overview



1 System LED

[Click here](#) for detailed descriptions.

2 RJ45 Link/Speed/Activity LED

Off	No Link
Amber	Link Established at 10/100 Mbps Flashing Indicates Activity
Green	Link Established at 1000 Mbps (1 Gbps) Flashing Indicates Activity

3 SFP+ Link/Speed/Activity LED (US-48 only)

Off	No Link
Green	Link Established at 1 Gbps Flashing Indicates Activity
White	Link Established at 10 Gbps Flashing Indicates Activity

4 SFP Link/Speed/Activity LED

Off	No Link
Green	Link Established at 1 Gbps Flashing Indicates Activity

5 RJ45 Ports

6 SFP+ Ports (US-48 only)

Hot-swappable SFP+ ports support 10 Gbps connections.

7 SFP Ports

Hot-swappable SFP ports support 1 Gbps connections.

8 Reset Button

This button serves two functions for the UniFi Switch:

- Press and release the Reset button to restart the device.
- Press and hold the Reset button (for at least five seconds) to restore the device to its factory default settings.

Back Panel Ports

**9 Console Port**

RJ45 serial console port for Command Line Interface (CLI) management. Use an RJ45-to-DB9, serial console cable, also known as a rollover cable, to connect the Console port to your computer. Then configure the following settings as needed:

- Baud rate 115200
- Data bits 8
- Parity NONE
- Stop bits 1
- Flow control NONE

10 DC Input

The 25VDC input can connect a redundant or stand-alone DC power source (not included) with minimum power: 25W (US-24) or 56W (US-48), 25 to 16V, and 2.5 mm DC power inline connector.



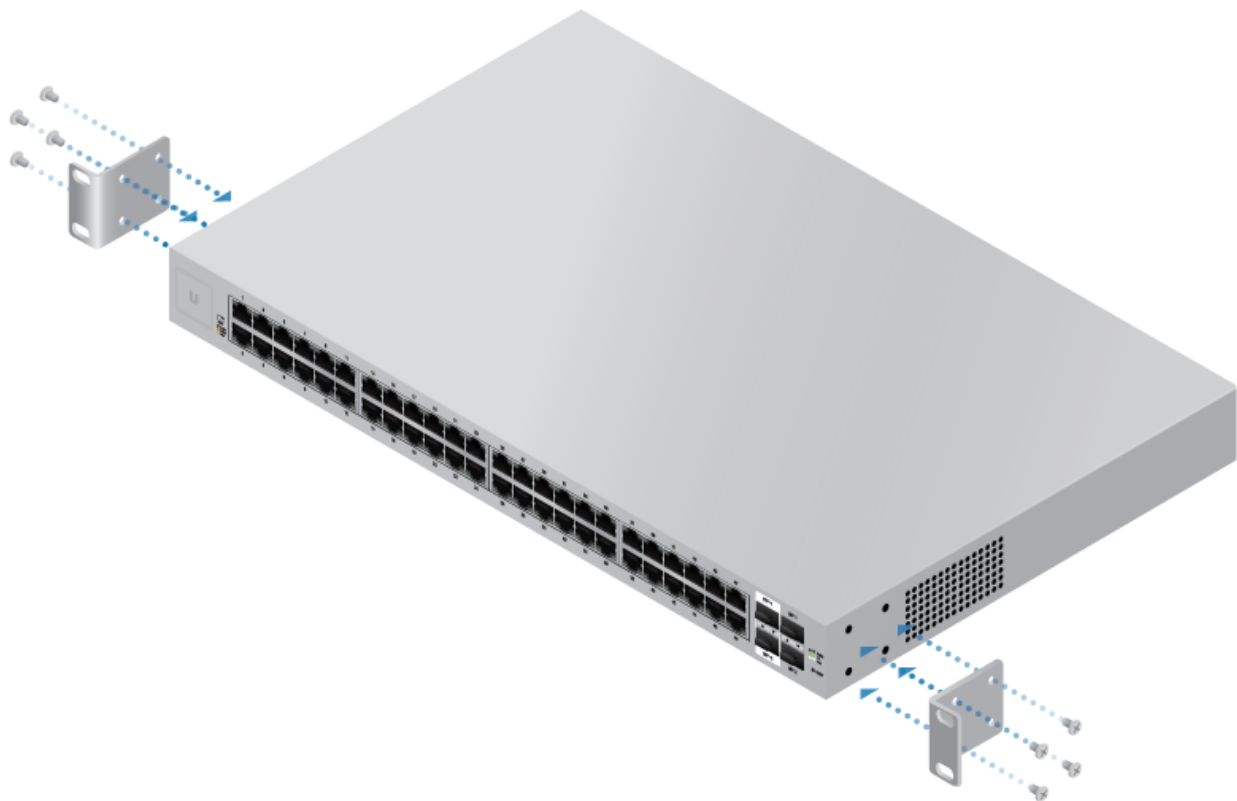
Note: You can use the redundant DC power source as a hot spare; if the internal AC/DC power supply no longer provides power, then the UniFi Switch will switch to the DC power source without interrupting its operation.

11 Power Port

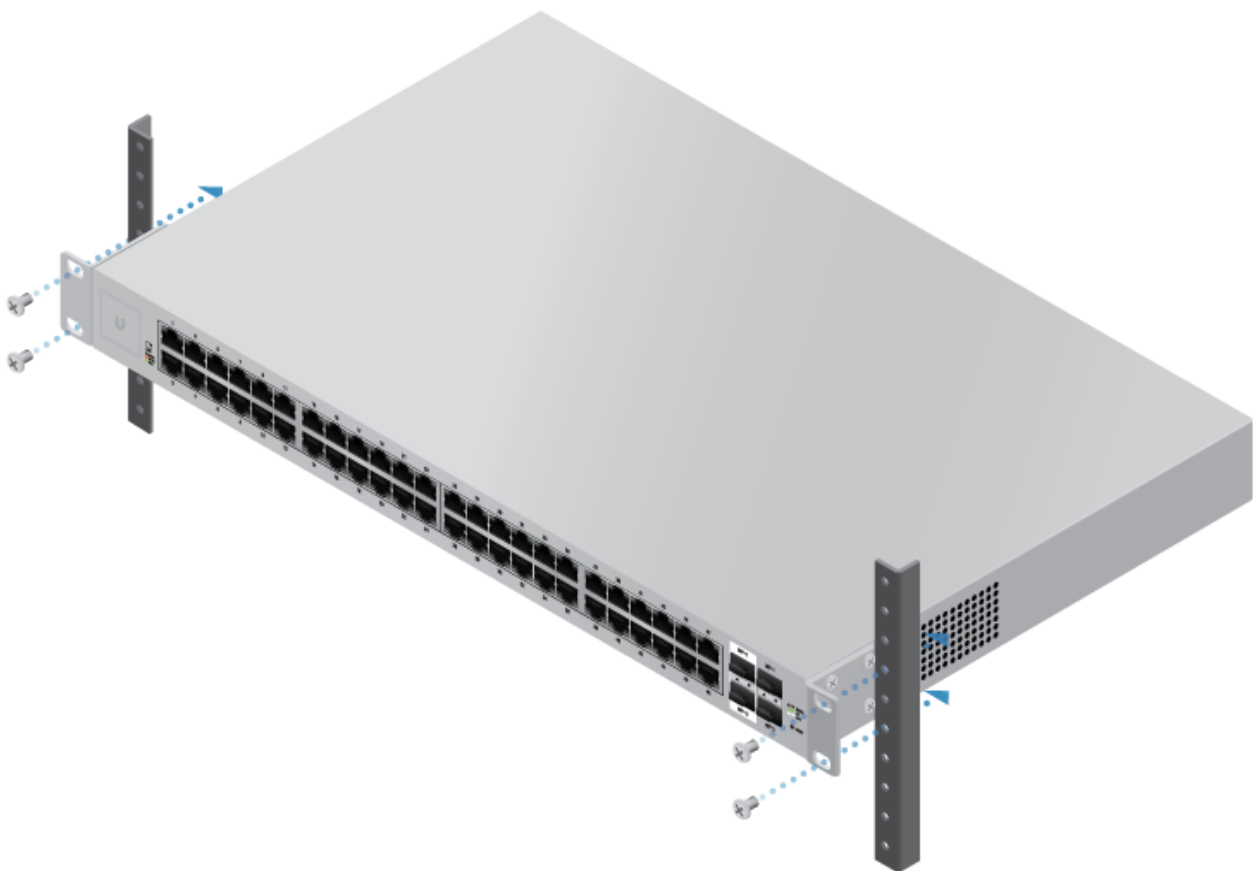
Connect the included Power Cord to the Power port.

Mounting in a Rack (Optional)

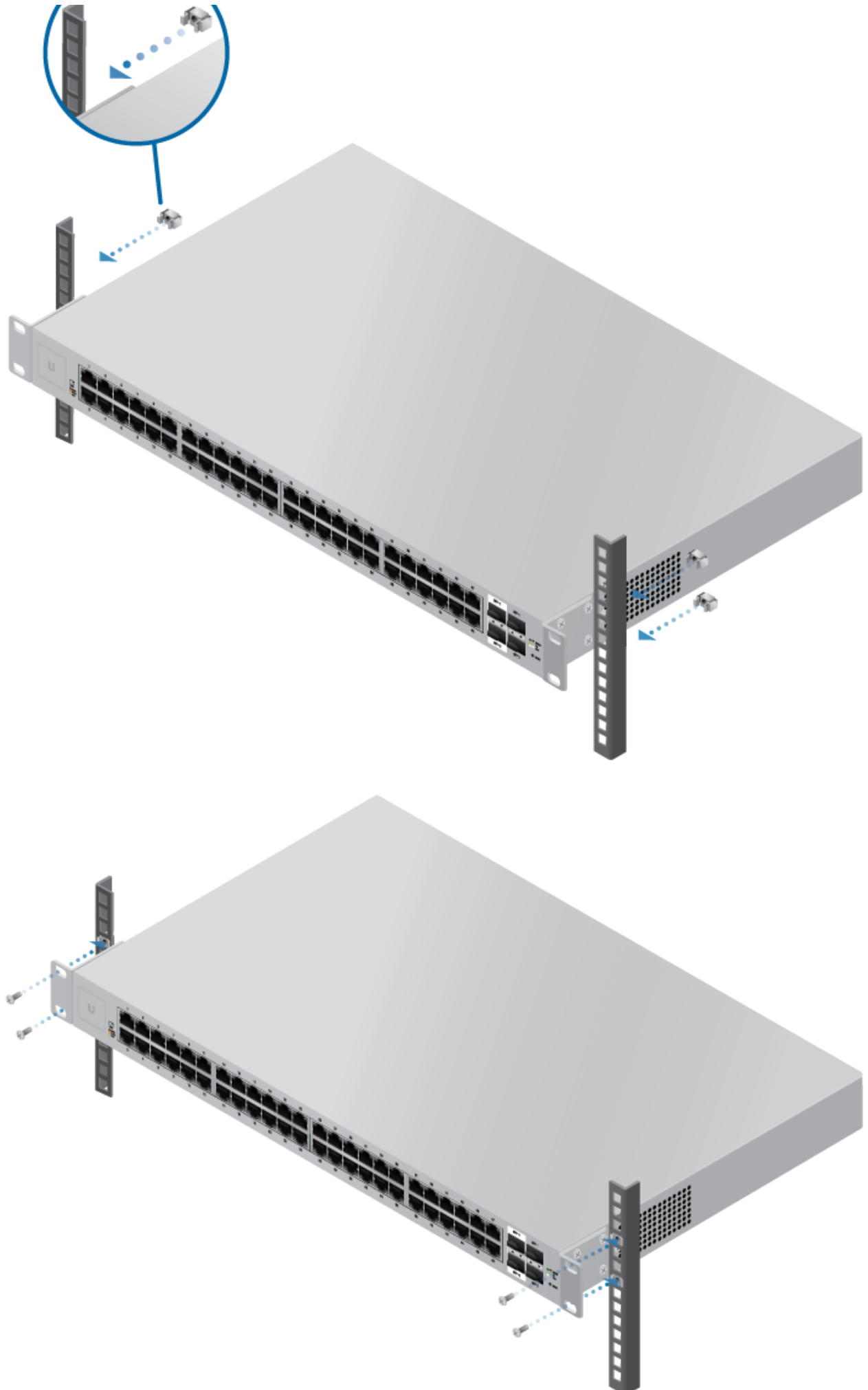
1.



2.



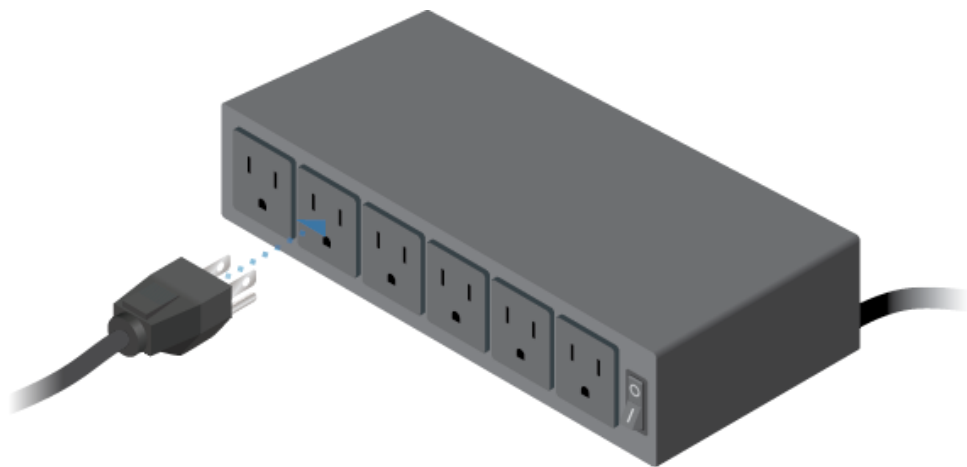
OR



Connecting Power



2.



Connecting Ethernet

1.



2.



Using SFP Ports

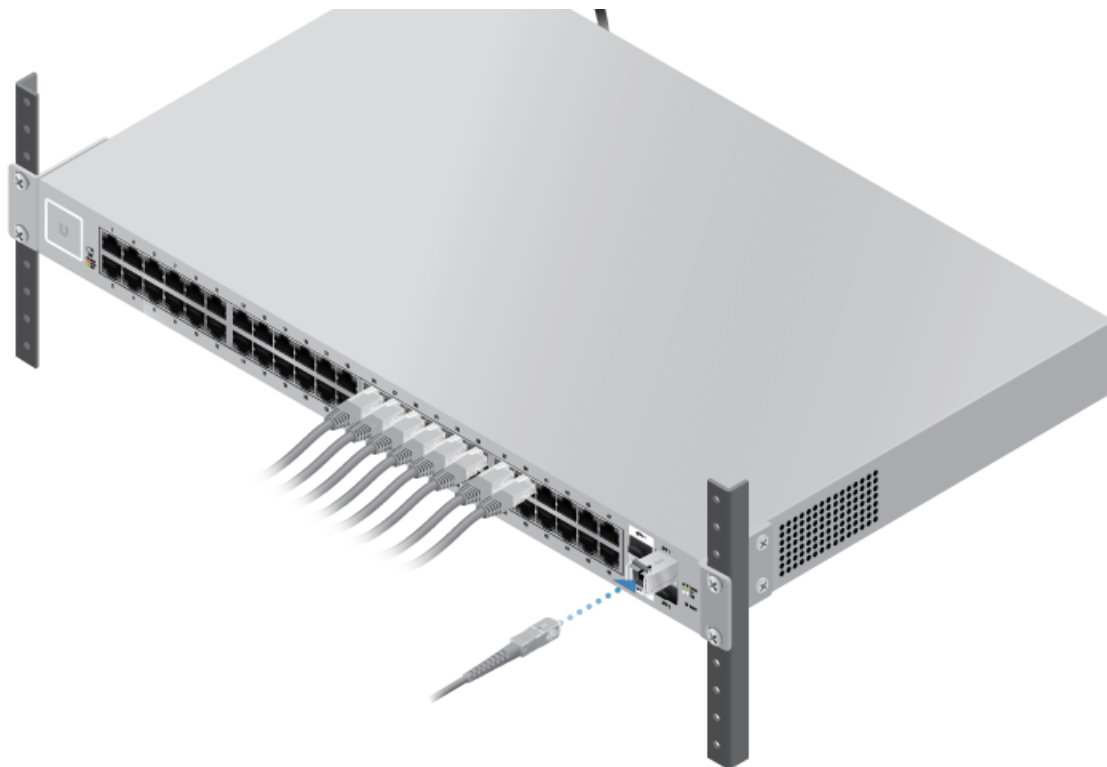
1.



2.



3.



For information about compatible fiber SFP modules, visit: community.ubnt.com/unifi

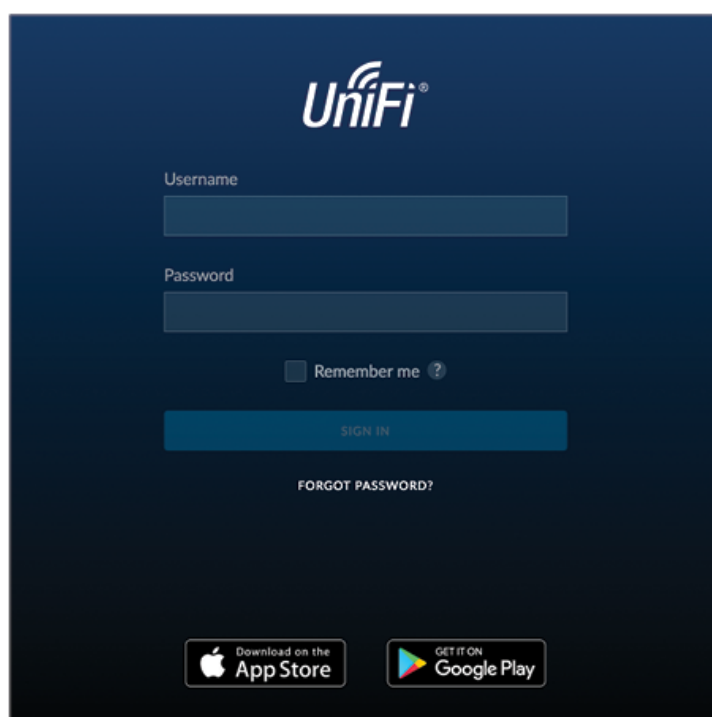
Software Installation

Download and install the latest version of the UniFi Controller software at ui.com/download/unifi and follow the on-screen instructions.



Note: If you already have UniFi Controller v5.4.x or higher installed, go to the section, Adopting the UniFi Switch.

After you have installed the software and run the UniFi Installation Wizard, a login screen will appear for the UniFi Controller management interface. Enter the username and password that you created and click Sign In.

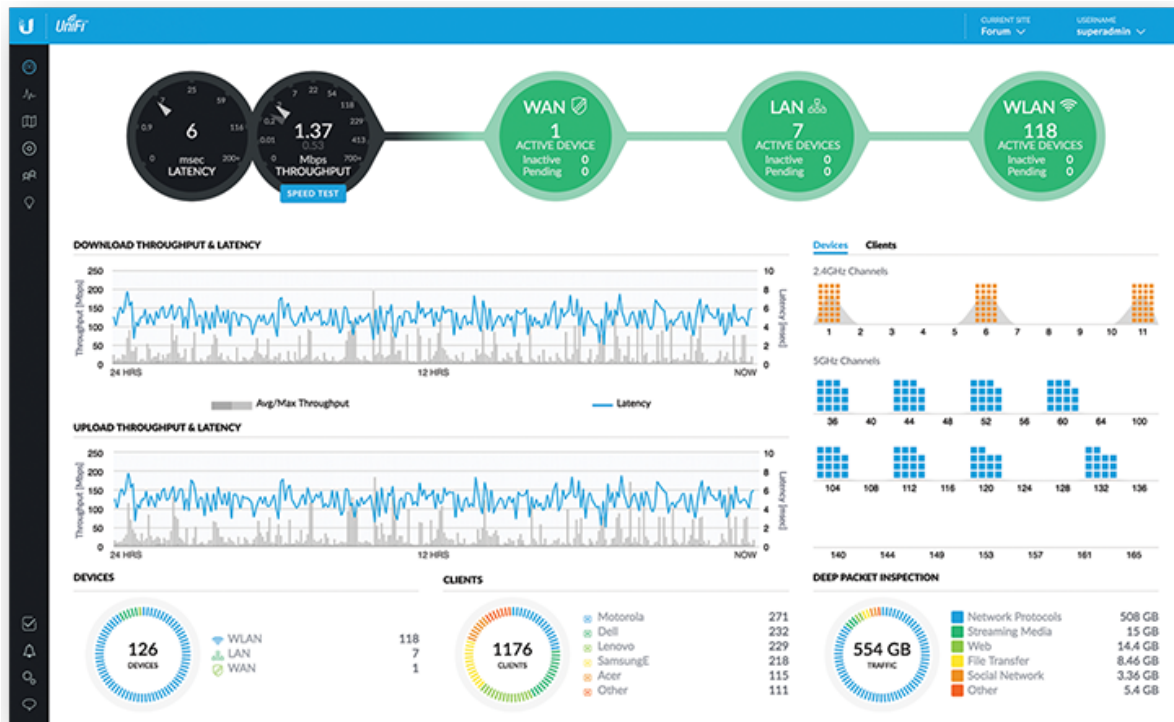


To adopt the UniFi Switch, proceed to the section, Adopting the UniFi Switch.

For information on configuring and using the UniFi Controller software, refer to the User Guide on the website: ui.com/download/unifi

Adopting the UniFi Switch

1. From the UniFi Controller dashboard, click Devices in the left menu bar.



2. Locate the UniFi Switch in the list of devices under the Model column. Click Adopt.

DEVICE NAME	IP ADDRESS	STATUS	MODEL	VERSION	UPTIME	ACTIONS
192.168.1.1	192.168.1.1	PENDING ADOPTION	UniFi Switch-8	4.3.11.4852927	55m 43s	ADOPT
Atmic-US-16-150W	192.168.1.233	CONNECTED	UniFi Switch 16 POE-150W	3.5.1.4088	10d 18h 45m 7s	LOCATE RESTART
Downstairs-US-48-500W	192.168.1.191	CONNECTED	UniFi Switch 48 POE-500W	3.5.1.4088	4d 21h 55m 15s	LOCATE RESTART
Workshop-US-48-750W	192.168.1.246	CONNECTED	UniFi Switch 48 POE-750W	3.5.1.4088	3d 21h 12m 13s	LOCATE RESTART
Rack-US-48-750W	192.168.1.6	CONNECTED	UniFi Switch 48 POE-750W	3.5.1.4088	4d 21h 55m 29s	LOCATE RESTART
PatchPanel-US-8-150W	192.168.1.204	CONNECTED	UniFi Switch 8 POE-150W	3.5.1.4088	1d 8h 10m 17s	LOCATE RESTART
AC-Broadcom	192.168.1.231	CONNECTED	UniFi AP-AC v2	3.5.1.4088	4d 21h 53m 4s	LOCATE RESTART
AC-LITE	192.168.1.162	CONNECTED	UniFi AP-AC-Lite	3.6.1.3553	3d 21h 17m 32s	LOCATE RESTART
AC-LR-Basement	192.168.1.137	CONNECTED	UniFi AP-AC-LR	3.6.1.3553	4d 21h 54m 6s	LOCATE RESTART
44:d9:e7:02:04:33	192.168.1.197	CONNECTED	UniFi AP-AC-Lite	3.6.1.3553	3d 21h 1m 32s	LOCATE RESTART
44:d9:e7:02:04:44	192.168.1.198	CONNECTED	UniFi AP-AC-LR	3.6.1.3553	3d 19h 26m 8s	LOCATE RESTART
AC-Pro-Basement	192.168.1.7	CONNECTED	UniFi AP-AC-Pro Gen2	3.6.1.3553	4d 21h 53m 32s	LOCATE RESTART
44:d9:e7:02:02:89	192.168.1.200	CONNECTED	UniFi AP-AC-Pro Gen2	3.6.1.3553	9d 17h 59m 46s	LOCATE RESTART
Prototype1 UAP-AC-Pro	192.168.1.182	CONNECTED (USB POE)	UniFi AP-AC-Pro Gen2	3.6.1.3553	1d 8h 9m 12s	LOCATE RESTART
AC-Pro-Crawlspace	192.168.1.134	CONNECTED	UniFi AP-AC-Pro Gen2	3.6.1.3553	3d 21h 19m 14s	LOCATE RESTART
Timeout	192.168.1.235	CONNECTED	UniFi AP-in Wall	3.5.1.4088	1d 8h 9m 14s	LOCATE RESTART
Living	192.168.1.136	CONNECTED	UniFi AP-in Wall	3.5.1.4088	1d 8h 8m 36s	LOCATE RESTART
Sitting	192.168.1.124	CONNECTED	UniFi AP-in Wall	3.5.1.4088	1d 8h 8m 15s	LOCATE RESTART
Master	192.168.1.158	CONNECTED	UniFi AP-in Wall	3.5.1.4088	1d 8h 8m 18s	LOCATE RESTART
Loft	192.168.1.139	CONNECTED	UniFi AP-in Wall	3.5.1.4088	1d 8h 8m 32s	LOCATE RESTART
Basement	192.168.1.140	CONNECTED	UniFi AP-in Wall	3.5.1.4088	1d 8h 8m 25s	LOCATE RESTART
24:a4:3c:94:2f:d9	192.168.1.122	CONNECTED	UniFi AP-Outdoor+	3.5.1.4088	3d 17h 22m 54s	LOCATE RESTART
Pro-roamtest2	192.168.1.164	CONNECTED	UniFi AP-Pro	3.5.1.4088	1d 8h 20m 25s	LOCATE RESTART
Pro-roamtest	192.168.1.141	CONNECTED	UniFi AP-Pro	3.5.1.4088	3d 21h 16m 49s	LOCATE RESTART

3. The System LED on the UniFi Switch will turn blue to confirm that it has been successfully adopted.

US-24, US-48 Quick Start Guide

US-24	
Dimensions	443 x 43 x 221 mm (17.44 x 1.69 x 8.70")
Weight	
Rack-Mount Brackets Included	2.60 kg (5.70 lb)
Rack-Mount Brackets Excluded	2.51 kg (5.53 lb)
Enclosure Characteristics	SGCC Steel
Max. Power Consumption	24W
Total Non-Blocking Line Rate	26 Gbps
Power Method	
AC	100-240 VAC / 50-60 Hz Universal Input
DC	DC 25W, 25 to 16V, with 2.5 mm DC Power Inline Connector
Power Supply	AC/DC Internal 20W DC
ESD/EMP Protection	Air ± 24 kV, Contact ± 24 kV
Operating Temperature	-5 to 40° C (23 to 104° F)
Operating Humidity	5 to 95% Non-Condensing
Shock and Vibration	ETSI300-019-1.4 Standard
Interfaces	
Networking	(24) 10/100/1000 Mbps RJ45 Ethernet Ports (2) 1 Gbps SFP Ethernet Ports
Management	(1) RJ45 Serial Out-of-Band, Ethernet In-Band
LEDs Per Port	
RJ45 Data Ports	Speed/Link/Activity
SFP Data Ports	Speed/Link/Activity
Rack Mount	Yes, 1U
Certifications	CE, FCC, IC

US-48	
Dimensions	443 x 43 x 286 mm (17.44 x 1.69 x 11.26")
Weight	
Rack-Mount Brackets Included	3.65 kg (8.06 lb)
Rack-Mount Brackets Excluded	3.56 kg (7.85 lb)
Enclosure Characteristics	SGCC Steel
Max. AC Power Consumption	56W
Total Non-Blocking Line Rate	70 Gbps
Power Method	
AC	100-240 VAC / 50-60 Hz Universal Input
DC	DC 56W, 25 to 16V, with 2.5 mm DC Power Inline Connector
Power Supply	AC/DC Internal 56W DC
ESD/EMP Protection	Air ± 24 kV, Contact ± 24 kV

Operating Temperature	0 to 50 °C (32 to 122 °F)
Operating Humidity	5 to 95% Non-Condensing
Shock and Vibration	ETSI300-019-1.4 Standard
Interfaces	
Networking	(48) 10/100/1000 Mbps RJ45 Ethernet Ports (2) 1/10 Gbps SFP+ Ethernet Ports (2) 1 Gbps SFP Ethernet Ports
Management	(1) RJ45 Serial Out-of-Band, Ethernet In-Band
LEDs Per Port	
RJ45 Data Ports	Speed/Link/Activity
SFP Data Ports	Speed/Link/Activity
Rack Mount	Yes, 1U
Certifications	CE, FCC, IC

Safety Notices

1. Read, follow, and keep these instructions.
2. Heed all warnings.
3. Only use attachments/accessories specified by the manufacturer.



WARNING: Failure to provide proper ventilation may cause fire hazard. Keep at least 20 mm of clearance next to the ventilation holes for adequate airflow.



WARNING: To reduce the risk of fire or electric shock, do not expose this product to rain or moisture.



WARNING: Do not use this product in location that can be submerged by water.



WARNING: Avoid using this product during an electrical storm. There may be a remote risk of electric shock from lightning.

Electrical Safety Information

1. Compliance is required with respect to voltage, frequency, and current requirements indicated on the manufacturer's label. Connection to a different power source than those specified may result in improper operation, damage to the equipment or pose a fire hazard if the limitations are not followed.
2. There are no operator serviceable parts inside this equipment. Service should be provided only by a qualified service technician.
3. This equipment is provided with a detachable power cord which has an integral safety ground wire intended for connection to a grounded safety outlet.
 - a. Do not substitute the power cord with one that is not the provided approved type. Never use an adapter plug to connect to a 2-wire outlet as this will defeat the continuity of the grounding wire.
 - b. The equipment requires the use of the ground wire as a part of the safety certification, modification or misuse can provide a shock hazard that can result in serious injury or death.
 - c. Contact a qualified electrician or the manufacturer if there are questions about the installation prior to connecting the equipment.

- e. Protective bonding must be installed in accordance with local national wiring rules and regulations.

Limited Warranty

ui.com/support/warranty

The limited warranty requires the use of arbitration to resolve disputes on an individual basis, and, where applicable, specify arbitration instead of jury trials or class actions.

Compliance

FCC

Changes or modifications not expressly approved by the party responsible for compliance could void the user's authority to operate the equipment.

This device complies with Part 15 of the FCC Rules. Operation is subject to the following two conditions.

1. This device may not cause harmful interference, and
2. This device must accept any interference received, including interference that may cause undesired operation.

This equipment has been tested and found to comply with the limits for a Class A digital device, pursuant to Part 15 of the FCC Rules. These limits are designed to provide reasonable protection against harmful interference when the equipment is operated in a commercial environment. This equipment generates, uses, and can radiate radio frequency energy and, if not installed and used in accordance with the instruction manual, may cause harmful interference to radio communications. Operations of this equipment in a residential area is likely to cause harmful interference in which case the user will be required to correct the interference at his own expense.

ISED Canada

CAN ICES-3(A)/NMB-3(A)

Australia and New Zealand



Warning: This equipment is compliant with Class A of CISPR 32. In a residential environment this equipment may cause radio interference.

CE Marking

CE marking on this product represents the product is in compliance with all directives that are applicable to it.



WEEE Compliance Statement

Declaration of Conformity

