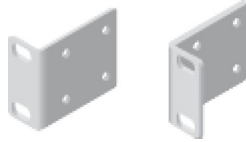


## Package Contents



UniFi Switch



Rack-Mount Brackets (Qty. 2)



Bracket Screws (Qty. 8)



Mounting Screws (Qty. 4)



Cage Nuts (Qty. 4)



Power Cord



Rubber Feet (Qty. 4)

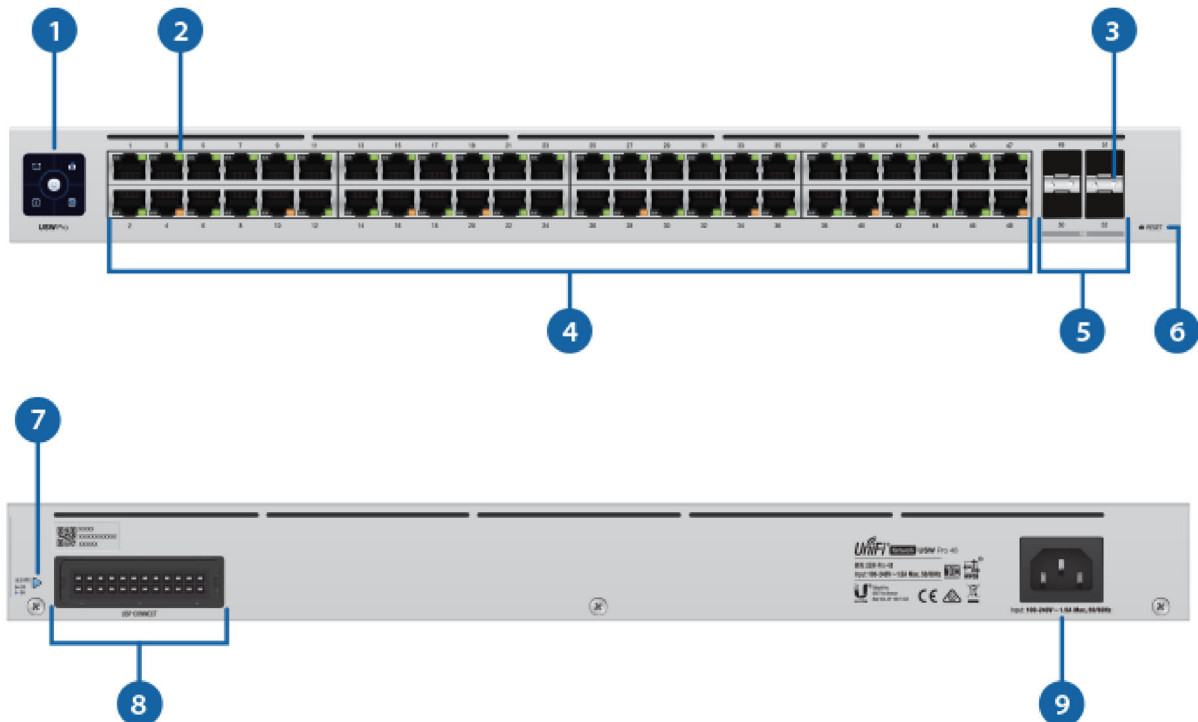
## System Requirements

- Linux, Mac OS X, or Microsoft Windows 7/8/10
- Java Runtime Environment 1.6 (1.8 or newer recommended)
- Web Browser: Google Chrome (Other browsers may have limited functionality.)
- UniFi Controller software v5.12.x (or newer), available at:  
[ui.com/download/unifi](http://ui.com/download/unifi)



**IMPORTANT:** We strongly recommend using UPS backup and power regulation to prevent equipment damage due to stability issues with local

## Hardware Overview



### 1 Touchscreen Display

Bootup Animation	Initializing.
Steady White	Factory defaults, waiting for adoption.
Steady Blue	Successfully adopted by a network and working properly.
Location Animation	This indicates that you clicked Locate in the UniFi Controller software. The software will also display the location of the device on the map.

### 2 RJ45 Speed/Link/Activity LED (Ports 1 - 48)

Off	No Link
Amber	Link Established at 10/100 Mbps Flashing Indicates Activity
Green	Link Established at 1000 Mbps Flashing Indicates Activity

### 3 SFP+ Speed/Link/Activity LED (Ports 49 - 52)

--	--

## USW-Pro-48 Quick Start Guide

Green	Link Established at 1 Gbps Flashing Indicates Activity
White	Link Established at 10 Gbps Flashing Indicates Activity
<b>4</b> RJ45 (Ports 1 - 48)	
RJ45 ports support 10/100/1000 Ethernet connections.	
<b>5</b> SFP+ (Ports 49 - 52)	
Hot-swappable SFP+ ports support 1/10 Gbps connections.	
<b>6</b> Reset Button	
<p>This button serves two functions for the UniFi Switch:</p> <ul style="list-style-type: none"><li>• <a href="#">Restart</a> Press and release the Reset button quickly.</li><li>• <a href="#">Restore to Factory Default Settings</a> Press and hold the Reset button for more than five seconds.</li></ul>	
<b>7</b> USP LED	
The LED lights up blue when there is an active power connection on the USP DC input.	
<b>8</b> USP Connect DC Input	
This DC input provides redundant power when the UniFi Switch is connected to the UniFi SmartPower Redundant Power System, model USP-RPS, via the USP Cable (not included). If there is an AC power loss or internal power supply failure, the UniFi Switch will draw power from the USP-RPS instead.	
<b>9</b> Power Port	
Connect the included Power Cord to the Power port.	

## Installation Requirements

- Phillips screwdriver
- Standard-sized, 19" wide rack with a minimum of 1U height available
- For indoor applications, use Category 5 (or above) UTP cabling approved for indoor use.
- For outdoor applications, shielded Category 5 (or above) cabling should be used for all wired Ethernet connections and should be grounded through the

## USW-Pro-48 Quick Start Guide

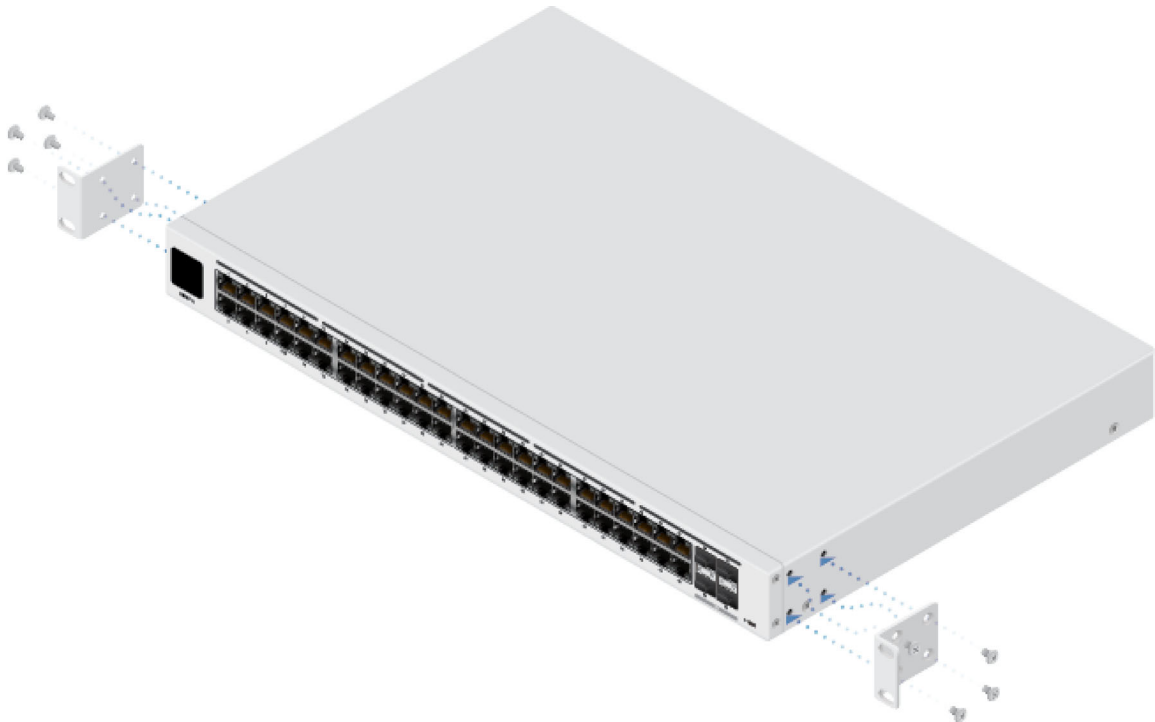
environments and destructive ESD events with industrial-grade, shielded Ethernet cable from Ubiquiti. For more details, visit: [ui.com/toughcable](https://ui.com/toughcable)



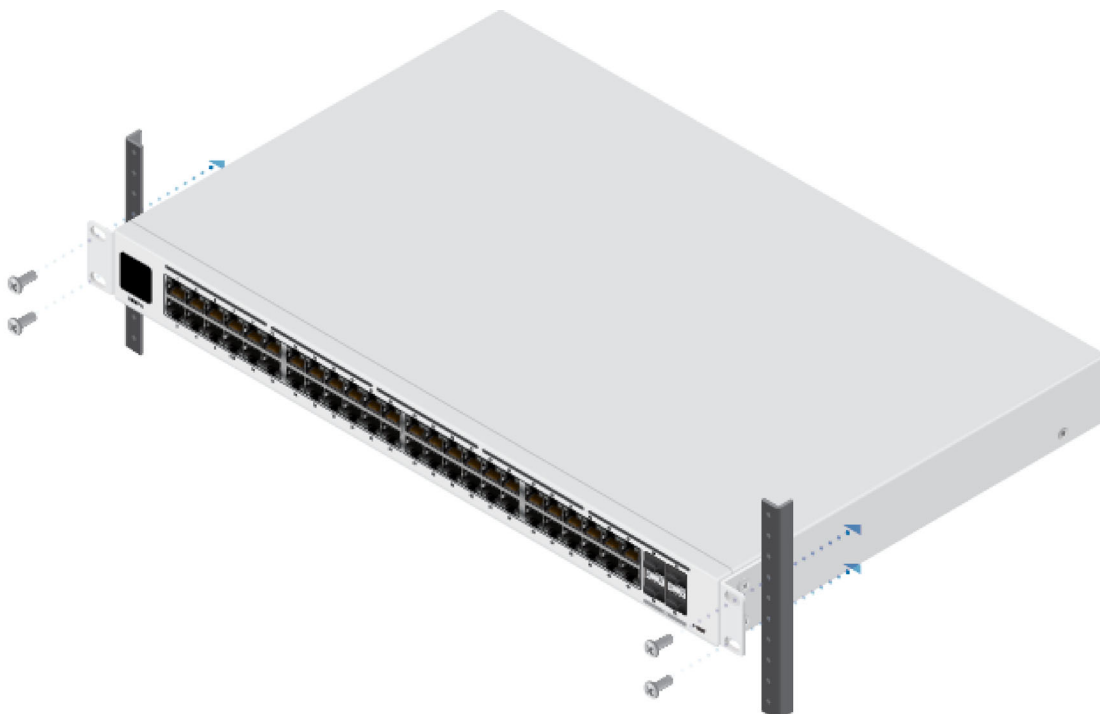
**Note:** Although the cabling can be located outdoors, the UniFi Switch itself should be housed inside a protective enclosure.

## Hardware Installation

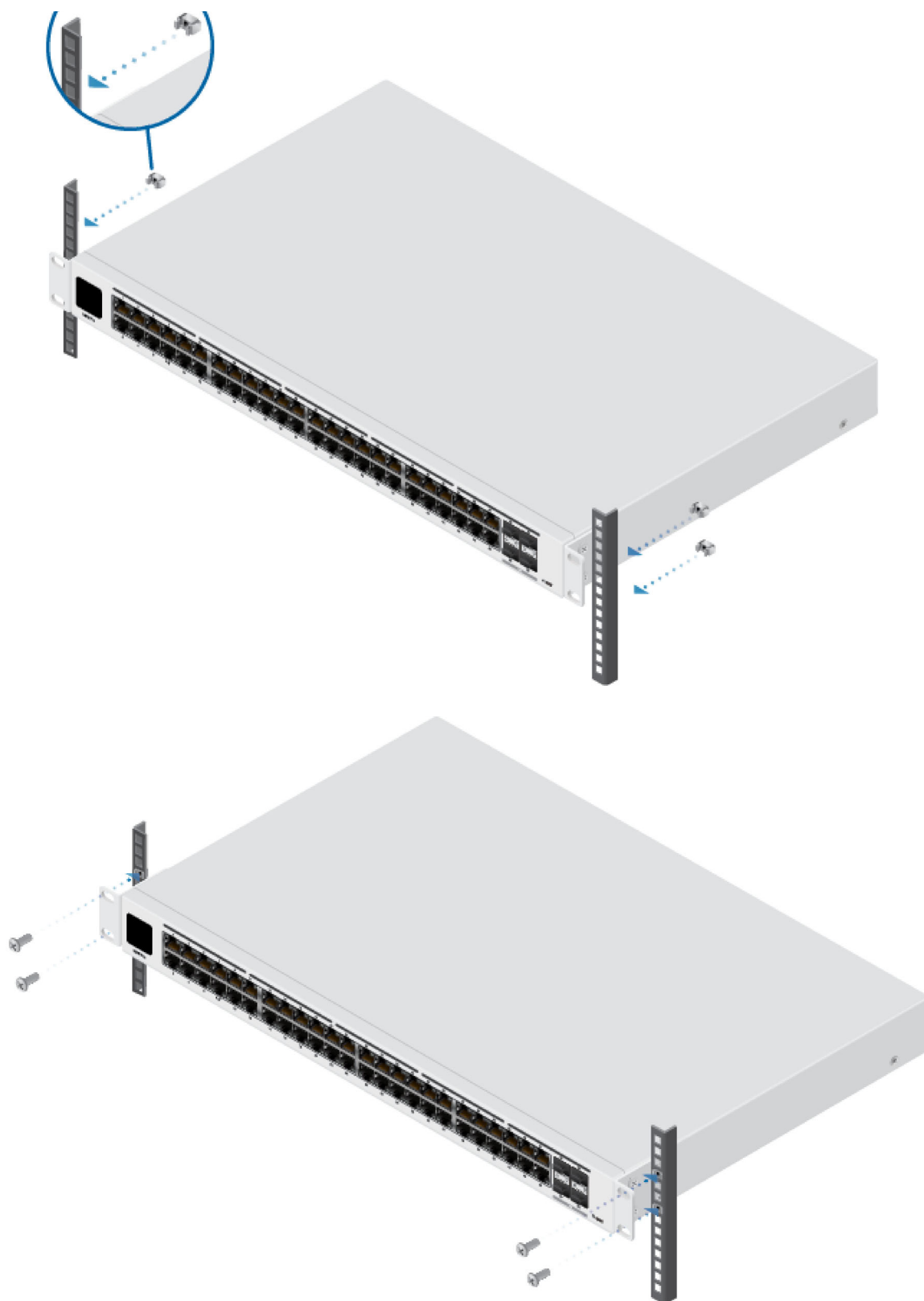
1.



2.



OR



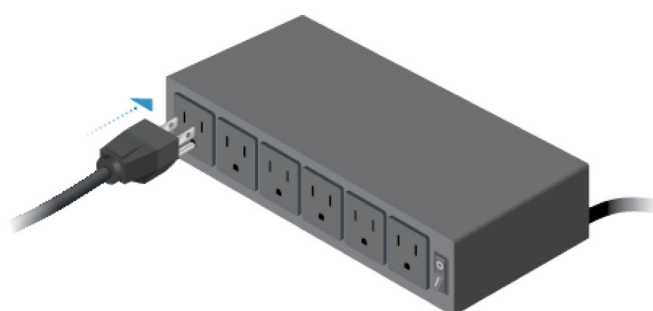
## Connecting Power

1.

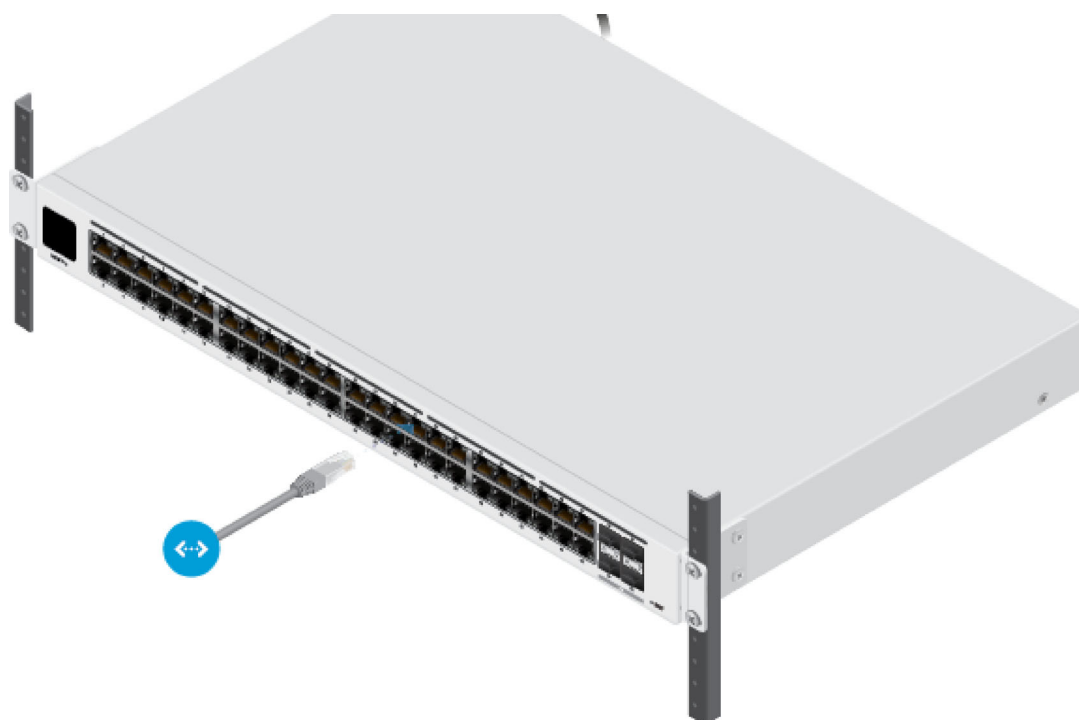
## USW-Pro-48 Quick Start Guide



2.

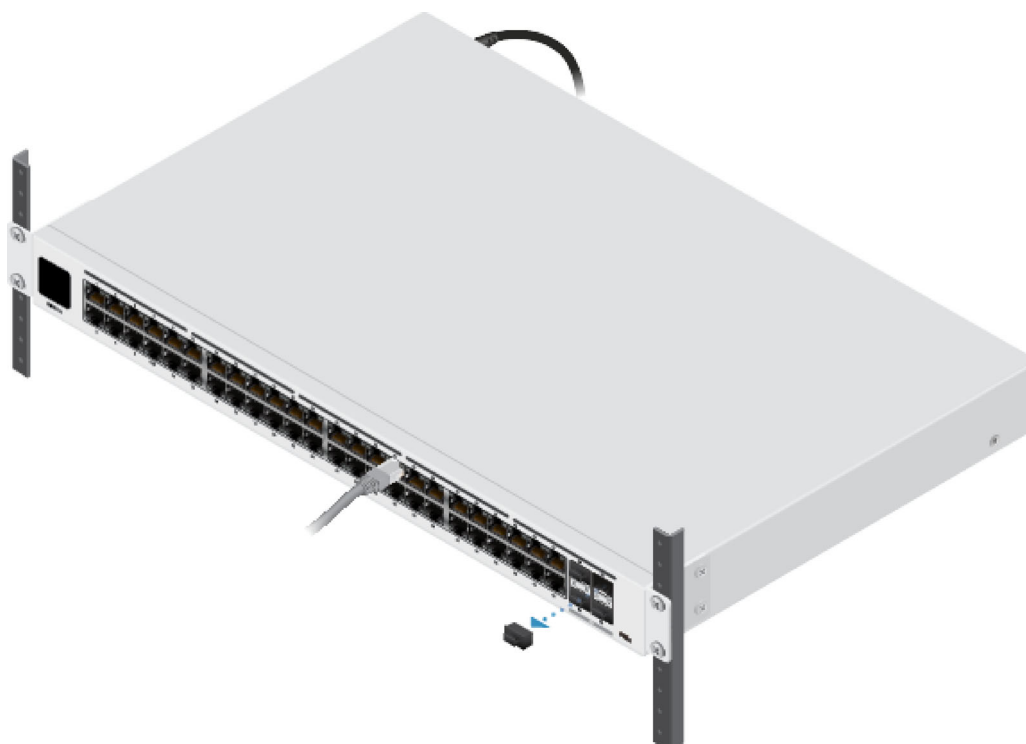


## Connecting Ethernet

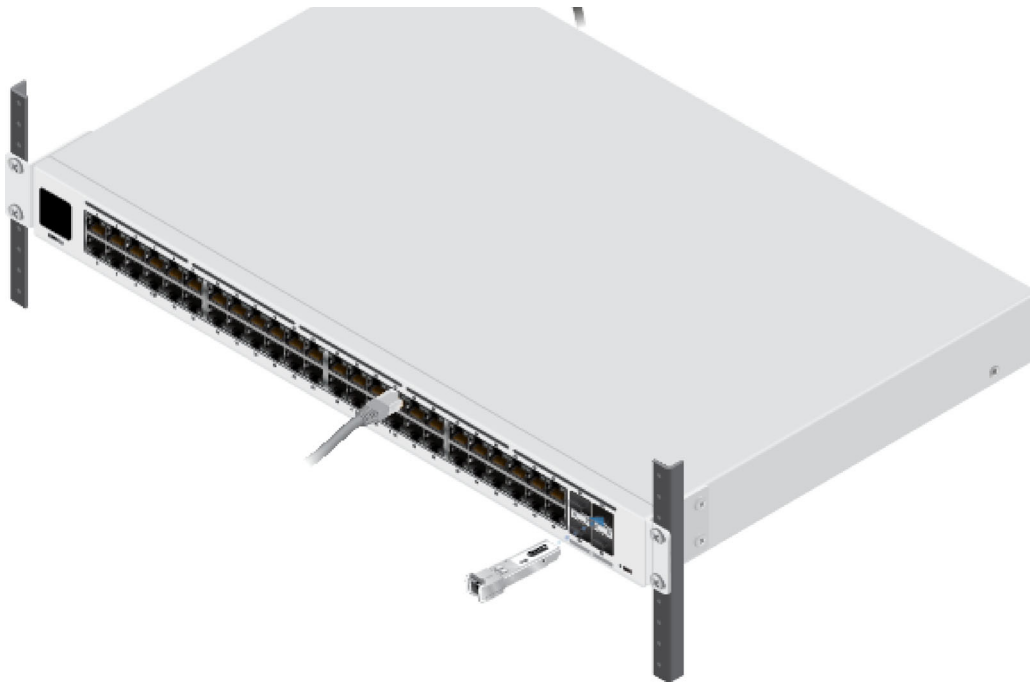


## Connecting SFP

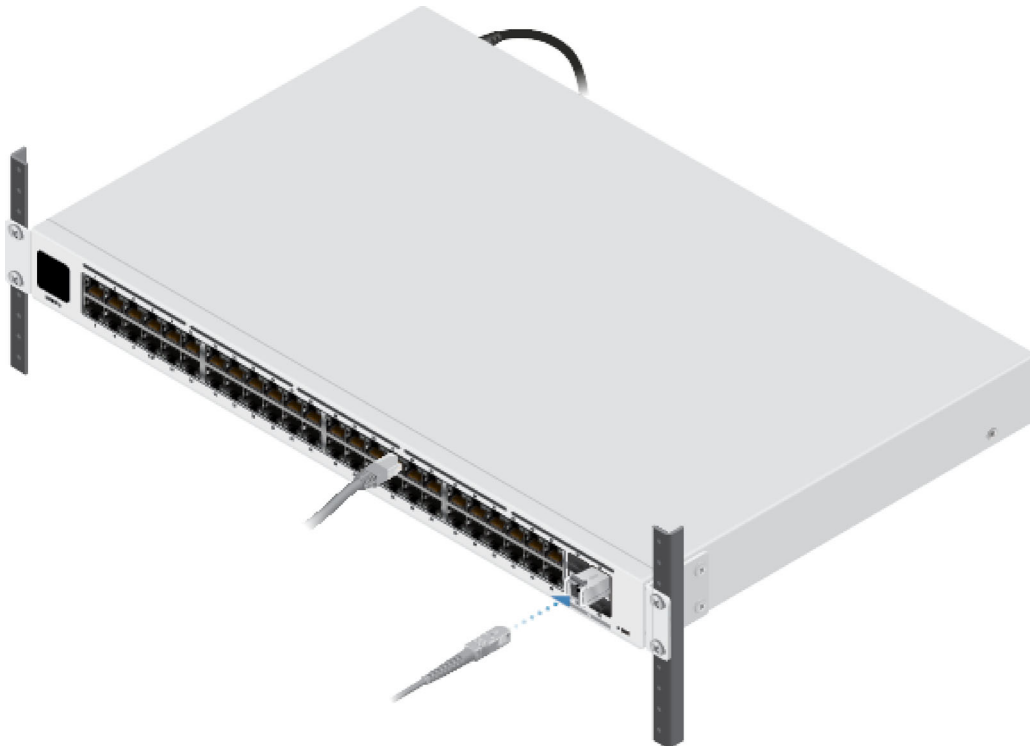
1.



2.



3.



For information about compatible fiber SFP modules, visit:  
[ubnt.link/UniFi\\_SFP\\_DAC\\_Compatibility](https://ubnt.link/UniFi_SFP_DAC_Compatibility)

## Software Installation

Download and install the latest version of the UniFi Controller software at [ui.com/download/unifi](https://ui.com/download/unifi) and follow the on-screen instructions.

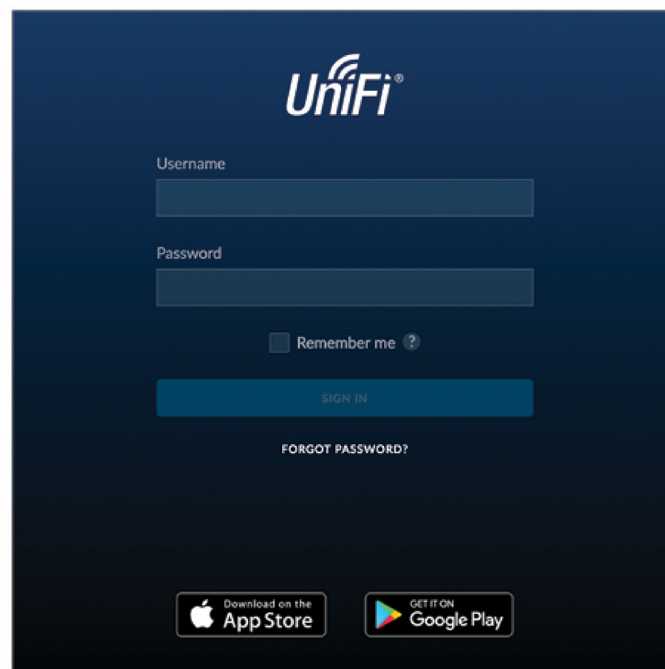


**Note:** If you already have UniFi Controller v5.12.x or higher installed, go to the section, Adopting the UniFi Switch.



## USW-Pro-48 Quick Start Guide

username and password that you created and click Sign In.



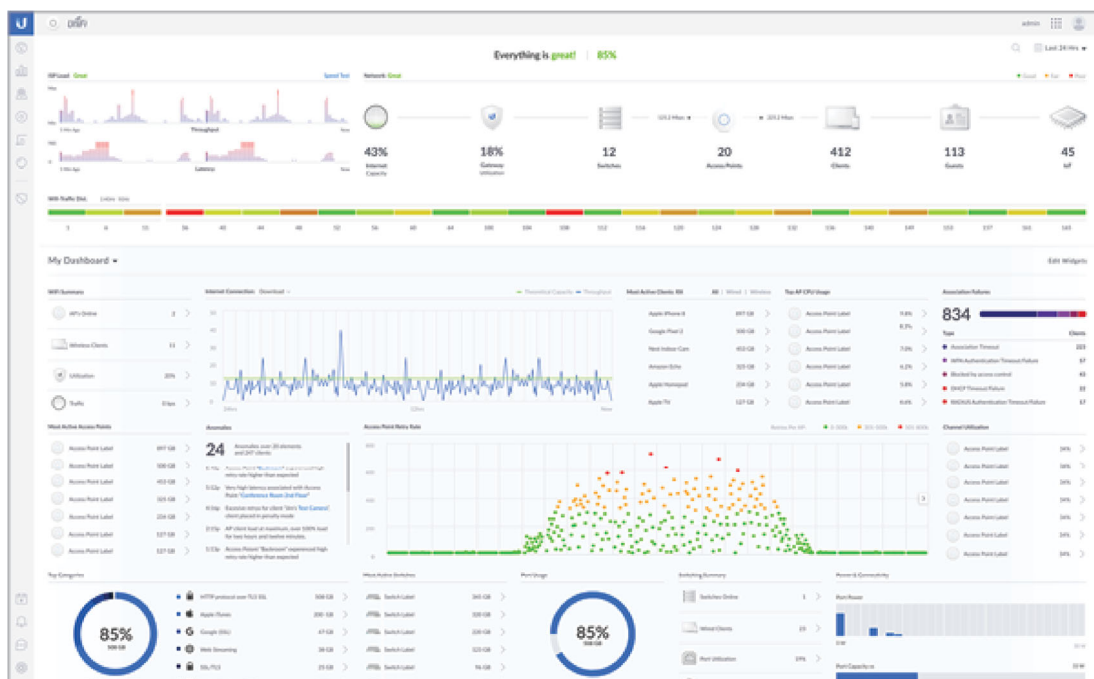
You can manage your network and view network statistics using the UniFi Controller management interface.

To adopt the UniFi Switch, proceed to the section, Adopting the UniFi Switch.

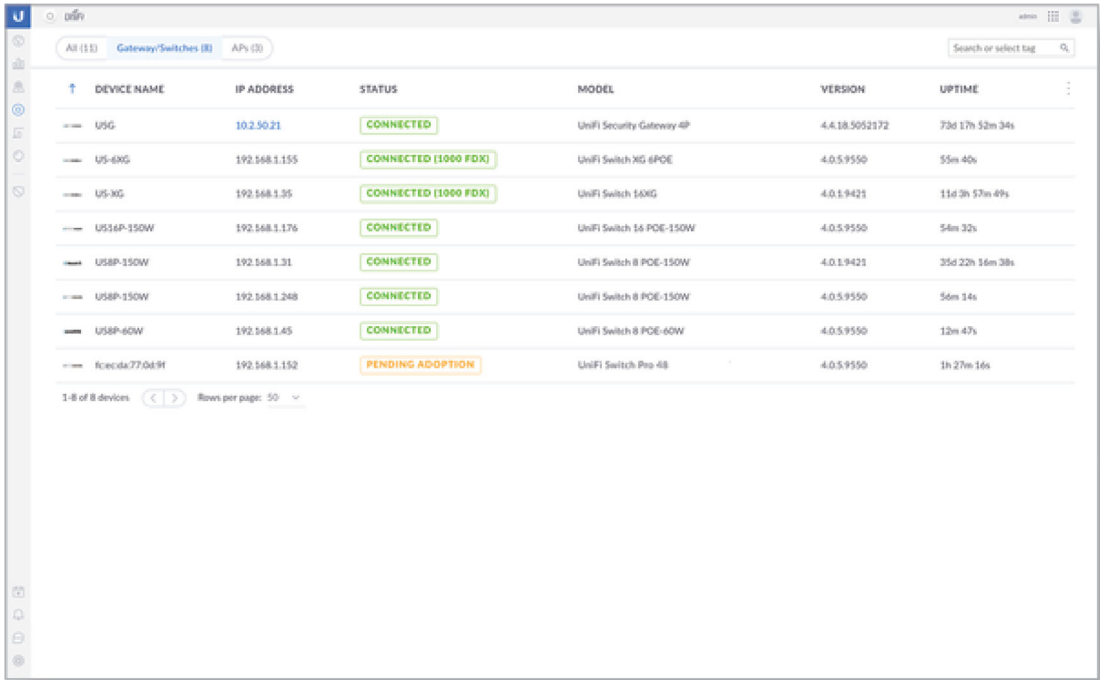
For information on configuring and using the UniFi Controller software, refer to the User Guide on the website: [ui.com/download/unifi](https://ui.com/download/unifi)

## Adopting the UniFi Switch

1. From the UniFi Controller dashboard, click Devices in the left menu bar.



# USW-Pro-48 Quick Start Guide



3. The display will turn blue to confirm that the UniFi Switch has been successfully adopted.

## Specifications

USW-Pro-48	
Dimensions	442.4 x 285.4 x 43.7 mm (17.42 x 11.24 x 1.72")
Weight	4.00 kg (8.82 lb)
With Rackmount Brackets	4.09 kg (9.02 lb)
Interfaces	
Networking	(48) 10/100/1000 RJ45 Ports (4) 10G SFP+ Ethernet Ports
Management	Ethernet In-Band
Power Method	
Universal Input	100-240VAC, 50/60 Hz
USP RPS DC Input	11.5VDC, 5.22A
Power Supply	AC/DC, Internal, 60W
Supported Voltage Range	100 to 240VAC
Max. Power Consumption	60W
LEDs	
RJ45 Data Ports	Speed/Link/Activity
SFP+ Data Ports	Link/Activity
ESD/EMP Protection	Air: ± 16 kV, Contact: ± 12 kV

## USW-Pro-48 Quick Start Guide

Shock and vibration	EN 151300-019-1.4 Standard
Operating Temperature	-5 to 45° C (23 to 113° F)
Operating Humidity	10 to 90% Noncondensing
Certifications	CE, FCC, IC

## Safety Notices

1. Read, follow, and keep these instructions.
2. Heed all warnings.
3. Only use attachments/accessories specified by the manufacturer.



**WARNING:** Failure to provide proper ventilation may cause fire hazard. Keep at least 20 mm of clearance next to the ventilation holes for adequate airflow.



**WARNING:** To reduce the risk of fire or electric shock, do not expose this product to rain or moisture.



**WARNING:** Do not use this product in location that can be submerged by water.



**WARNING:** Avoid using this product during an electrical storm. There may be a remote risk of electric shock from lightning.

## Electrical Safety Information

1. Compliance is required with respect to voltage, frequency, and current requirements indicated on the manufacturer's label. Connection to a different power source than those specified may result in improper operation, damage to the equipment or pose a fire hazard if the limitations are not followed.
2. There are no operator serviceable parts inside this equipment. Service should be provided only by a qualified service technician.
3. This equipment is provided with a detachable power cord which has an integral safety ground wire intended for connection to a grounded safety outlet.
  - a. Do not substitute the power cord with one that is not the provided approved type. Never use an adapter plug to connect to a 2-wire outlet as this will defeat the continuity of the grounding wire.
  - b. The equipment requires the use of the ground wire as a part of the safety certification, modification or misuse can provide a shock hazard that can result in serious injury or death.
  - c. Contact a qualified electrician or the manufacturer if there are questions about the installation prior to connecting the equipment.
  - d. Protective earthing is provided by Listed AC adapter. Building installation shall provide appropriate short-circuit backup protection.
  - e. Protective bonding must be installed in accordance with local national wiring rules and regulations.
4. The product is used in Service Access Area.

[ui.com/support/warranty](http://ui.com/support/warranty)

The limited warranty requires the use of arbitration to resolve disputes on an individual basis, and, where applicable, specify arbitration instead of jury trials or class actions.

## Compliance

### FCC

Changes or modifications not expressly approved by the party responsible for compliance could void the user's authority to operate the equipment.

This device complies with Part 15 of the FCC Rules. Operation is subject to the following two conditions.

1. This device may not cause harmful interference, and
2. This device must accept any interference received, including interference that may cause undesired operation.

This equipment has been tested and found to comply with the limits for a Class A digital device, pursuant to Part 15 of the FCC Rules. These limits are designed to provide reasonable protection against harmful interference when the equipment is operated in a commercial environment. This equipment generates, uses, and can radiate radio frequency energy and, if not installed and used in accordance with the instruction manual, may cause harmful interference to radio communications. Operations of this equipment in a residential area is likely to cause harmful interference in which case the user will be required to correct the interference at his own expense.

### ISED Canada

CAN ICES-3(A)/NMB-3(A)

### Australia and New Zealand



Warning: This equipment is compliant with Class A of CISPR 32. In a residential environment this equipment may cause radio interference.

### CE Marking

CE marking on this product represents the product is in compliance with all directives that are applicable to it.



### WEEE Compliance Statement

### Declaration of Conformity

## Online Resources

