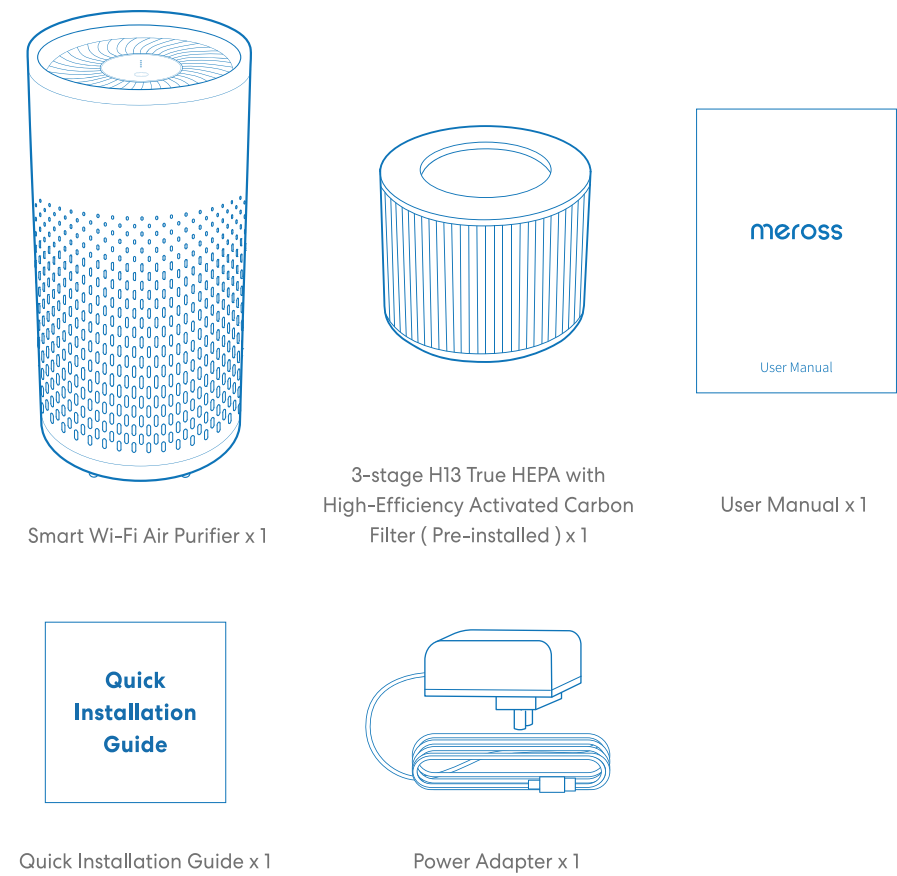


Safety Information

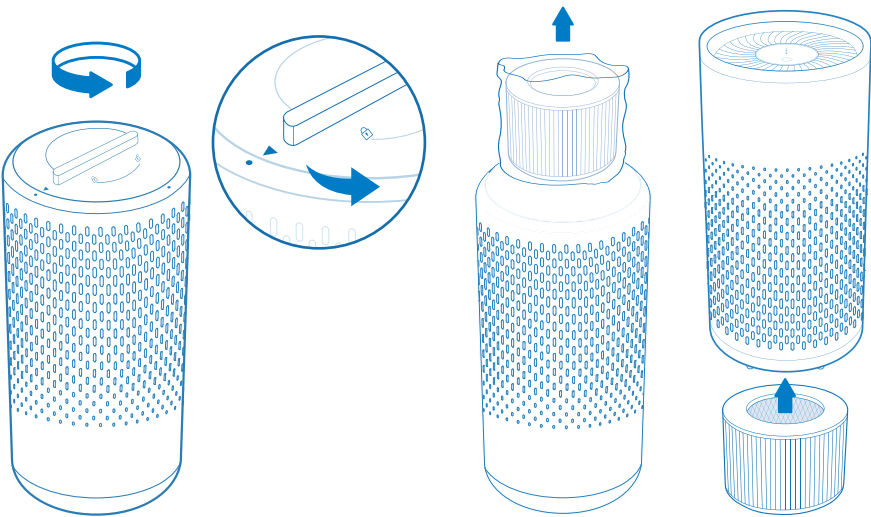
- Do NOT use without first removing the plastic packaging from the filter. Otherwise, the air purifier will not work properly and even pose a fire hazard as a result of overheat.
- Do NOT use your air purifier outdoors.
- Do NOT move the product when it is working.
- Do NOT sit or place heavy things on the air purifier.
- Do NOT add essential oil to the air purifier or filter.
- Do NOT use oil diffuser near the purifier.
- Do NOT block the airflow with objects such as curtains.
- Do place the purifier on a flat, stable surface.
- Do keep at least 15in/38cm of clearance on all sides of the purifier.
- Do keep the air purifier away from water or damp areas. Never place it in water or liquid.

Package Contents

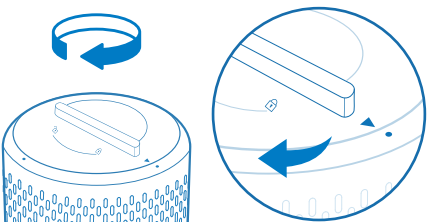


Installation Guide

- Hardware Installation



- (1) Flip the air purifier over on a clean and soft surface. Turn the filter cover counterclockwise and remove it.
- (2) Remove the filter from its plastic packaging and place it back into the purifier with its hollow surface facing inwardly.



- (3) Replace the filter cover and turn clockwise to lock.
- (4) Place the purifier on a flat, stable surface. Keep it away from curtains and other objects that would block the airflow.

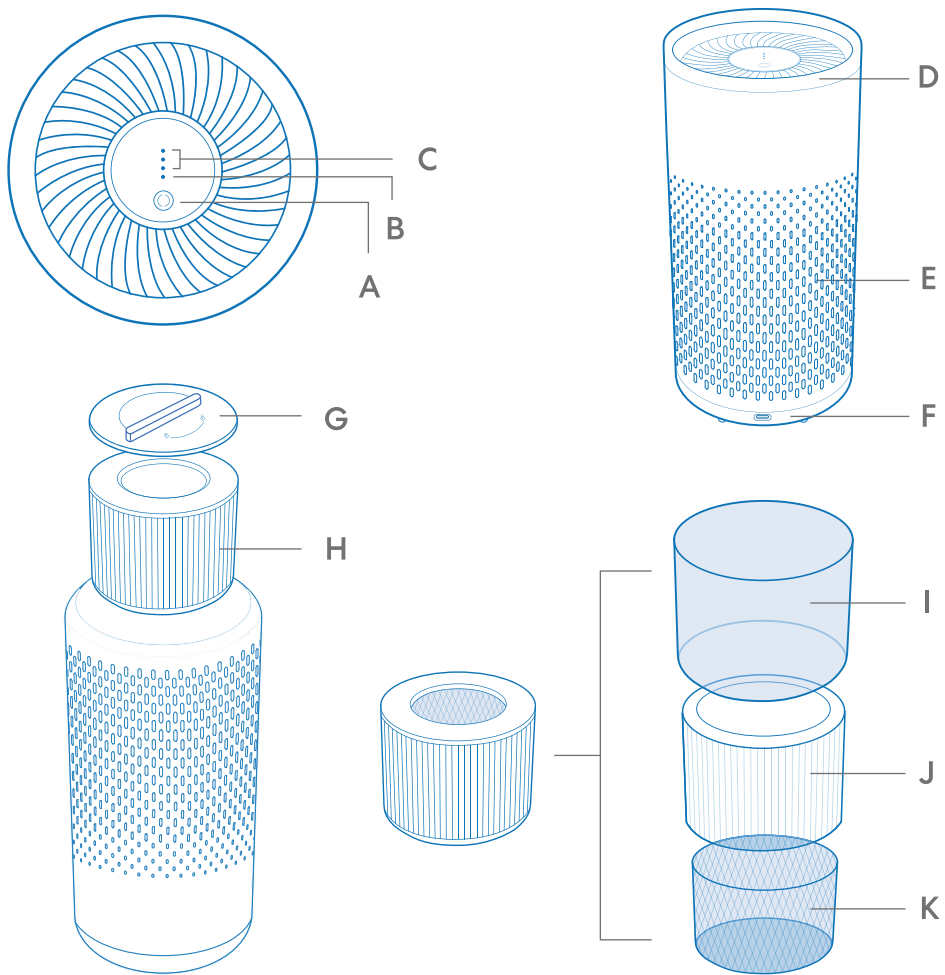
- Software Installation

1. Download the Meross app.
2. Plug the purifier into an outlet near home Wi-Fi.



Getting to Know Your Air Purifier

- A — Power Button Tap to turn on the purifier/ change the fan speed, long tap to turn off the purifier
- B — Sleep Mode Indicator
- C — Low/Medium/High Fan Speed Indicators
- D — Air Outlet
- E — Air Inlet
- F — DC Power Port Input: 12V/2A
- G — Filter Cover
- H — Filter
- I — Pre-filter Isolates large particles such as hair and dust
- J — H13 True HEPA Filter Catches 99.97% of particles below 0.3 microns including smoke, pollen, pet dander and contaminated particles
- K — Activated Carbon Filter Removes odors, cooking smells, VOCs and other toxic substances

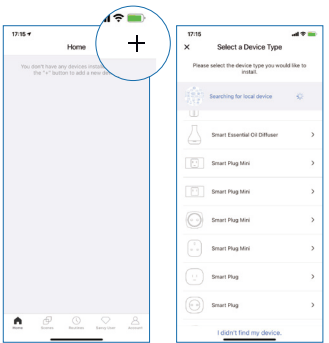


3. Set up the device.

- (1) Connect your smartphone or tablet to a 2.4 GHz Wi-Fi.
- (2) The smart device supports iOS 13/ iPadOS 13 and later. In order to have better user experience, it is recommended that you upgrade your iOS or iPadOS to the latest version before pairing with the device.
- (3) Launch the Meross app, and log in to your account, or if you are a new user, tap Sign up to create a new account.
- (4) Tap the “+” icon to select the type of smart device you want to add, then you can just follow the setup wizard to finish configuration.

- Note:
- (1) As long as you finish configuration, you'll also be able to manage the device in Apple Home app.
- (2) If the QR code does not work, please try to add the smart device in Apple Home app.
- (3) Should you have any question, please visit <https://www.meross.com/support/>.

4. Relocation of the smart device does not require additional operations provided that it remains on the same network with strong Wi-Fi signal.



Link Meross to Google Assistant or Amazon Alexa

Set up the device in the Meross app first and then link it to voice assistants.

Link to Amazon Alexa

Go to **Account-> Amazon Alexa** and allow Meross to link with Alexa.

Link to Google Assistant

Go to **Account-> Google Assistant** and follow the step-by-step instructions to complete the linking process.

Let's have a try with the following voice commands:

Hey Siri, turn on my air purifier.

Alexa, set the air purifier speed to medium.

Ok Google, turn up the fan speed of my air purifier.

Maintenance

1. Clean the Air Purifier
- Unplug before cleaning.
 - Wipe the housing of the air purifier with a damp cloth, then dry it immediately.
 - Vacuum the inside of the air purifier.
 - Do not clean with abrasive chemicals or flammable cleaning agents.
2. Clean the Filter
- You can clean the outer pre-filter every 2–4 weeks. Clean the pre-filter using a soft brush or vacuum hose to remove hair, dust, and large particles. Do not immerse the filter in water or other liquids.



SIMPLE DEVICE
SIMPLIFY YOUR LIFE

Email: support@meross.com
Website: www.meross.com

meross



USER MANUAL

3. When to replace the Filter?

We advise you to replace your filter every 6-8 months. The performance of your filter depends on the work environment and frequency of use. For your convenience, we provide an estimation of the filter's life cycle in both Meross app and Apple Home app.

4. How to replace the Filter?

- (1) Unplug the air purifier. Flip the air purifier over and remove the filter cover.
- (2) Remove the old air filter.
- (3) Clean out any remaining dust or hair inside the purifier.
- (4) Unwrap the new air filter and place it into the housing.
- (5) Replace the filter cover and turn clockwise to lock.
- (6) Plug in the air purifier.
- (7) Reset the filter's life cycle in the Meross app.

FAQ

At Meross, we strive to assure your satisfaction. Attached below is a non-exhaustive list of questions that users are mostly concerned about.

1. My Air Purifier makes an unusual noise while the fan is on.

- (1) Make sure the air filter is properly in place with plastic packaging removed.
- (2) Check and replace the air filter.

2. The Airflow is significantly reduced.

- (1) Make sure the air filter is properly in place with plastic packaging removed.
- (2) Tap the power button to increase the fan speed.
- (3) Make sure there is enough space on all sides of the air purifier.
- (4) Clean dust, hair or other particles from the pre-filter.
- (5) Check and replace the filter.

3. How can I reset the filter's life cycle.

You can reset its life cycle in the Meross app.

4. What is the coverage area of this product?

It covers up to 207 sq.ft.

5. Where can I buy a new Filter?

Go to our website at <http://www.meross.com> to choose the filter that best suits your home.

To learn more, you can visit <https://www.meross.com/support/faqs> to find solutions for more frequently asked questions.

Warranty

Meross products are covered by a 12-month limited warranty from the date of purchase. Please visit <https://www.meross.com/support/warranty> for detailed warranty policy and product registration.

Disclaimer

- 1. The function of this smart device is tested under a typical circumstance described in our specifications. Meross does NOT guarantee that the smart device shall perform exactly the same as described under all circumstances.
- 2. By using third-party services including but not limited to Amazon Alexa, Google Assistant, Apple HomeKit and SmartThings, customers acknowledge that Meross shall not be held liable in any way for the data and private information collected by such parties. Meross's total liability is limited to what is expressly covered in its Privacy Policy.
- 3. Damages arising from ignorance of the SAFETY INFORMATION shall not be covered by Meross aftersales service, nor does Meross take any legal responsibility therefrom.

Canadian Compliance Statement

This device contains licence-exempt transmitter(s)/receiver(s) that comply with Innovation, Science and Economic Development Canada's licence-exempt RSS(s). Operation is subject to the following two conditions:

(1) This device may not cause interference.

(2) This device must accept any interference, including interference that may cause undesired operation of the device.

L'émetteur/récepteur exempt de licence contenu dans le présent appareil est conforme aux CNR d'Innovation, Sciences et Développement économique Canada applicables aux appareils radio exempts de licence. L'exploitation est autorisée aux deux conditions suivantes :

1) L'appareil ne doit pas produire de brouillage;

2) L'appareil doit accepter tout brouillage radioélectrique subi, même si le brouillage est susceptible d'en compromettre le fonctionnement.

The device meets the exemption from the routine evaluation limits in section 2.5 of RSS 102 and compliance with RSS-102 RF exposure, users can obtain Canadian information on RF exposure and compliance.

Le dispositif rencontre l'exemption des limites courantes d'évaluation dans la section 2.5 de RSS 102 et la conformité à l'exposition de RSS-102 rf, utilisateurs peut obtenir l'information canadienne sur l'exposition et la conformité de rf.

This transmitter must not be co-located or operating in conjunction with any other antenna or transmitter. This equipment should be installed and operated with a minimum distance of 20 centimeters between the radiator and your body.

Cet émetteur ne doit pas être Co-placé ou ne fonctionnant en même temps qu'aucune autre antenne ou émetteur. Cet équipement devrait être installé et actionné avec une distance minimum de 20 centimètres entre.

FCC Compliance Information Statement

Changes or modifications not expressly approved by the party responsible for compliance could void the user's authority to operate the equipment.

This device complies with Part 15 of the FCC Rules. Operation is subject to the following two conditions:

(1) this device may not cause harmful interference, and

(2) this device must accept any interference received, including interference that may cause undesired operation.

Note: This equipment has been tested and found to comply with the limits for a Class B digital device, pursuant to Part 15 of the FCC Rules. These limits are designed to provide reasonable protection against harmful interference in a residential installation. This equipment generates, uses, and can radiate radio frequency energy, and if not installed and used in accordance with the instructions, may cause harmful interference to radio communications. However, there is no guarantee that interference will not occur in a particular installation. If this equipment does cause harmful interference to radio or television reception, which can be determined by turning the equipment off and on, the user is encouraged to try to correct the interference by one or more of the following measures:

- Reorient or relocate the receiving antenna.
- Increase the separation between the equipment and receiver.
- Connect the equipment into an outlet on a circuit different from that to which the receiver is connected.
- Consult the dealer or an experienced radio/TV technician for help.

This equipment complies with FCC radiation exposure limits set forth for an uncontrolled environment. This equipment should be installed and operated with a minimum distance of 20cm between the radiator & your body. This transmitter must not be co-located or operating in conjunction with any other antenna or transmitter.