

Package Contents



UniFi Switch



Power Cord



Rack-Mount Brackets (Qty. 2)



Bracket Screws (Qty. 8)



Mounting Screws (Qty. 4)



Cage Nuts (Qty. 4)

Installation Requirements

- Phillips screwdriver (for rack- or wall-mounting)
- Standard-sized, 19" wide rack with a minimum of 1U height available (for rack-mounting)
- Use compatible fiber SFP+ modules with the appropriate fiber optic cabling. For information about compatible fiber SFP+ modules, visit: community.ubnt.com/unifi
- For indoor applications, use Category 6A (or above) UTP cabling approved for indoor use.
- For outdoor applications, shielded Category 6A (or above) cabling should be used for all wired Ethernet connections and should be grounded through the AC ground of the power supply.

We recommend that you protect your networks from harmful outdoor environments and destructive ESD events with industrial-grade, shielded Ethernet cable from Ubiquiti. For more details, visit: ui.com/toughcable

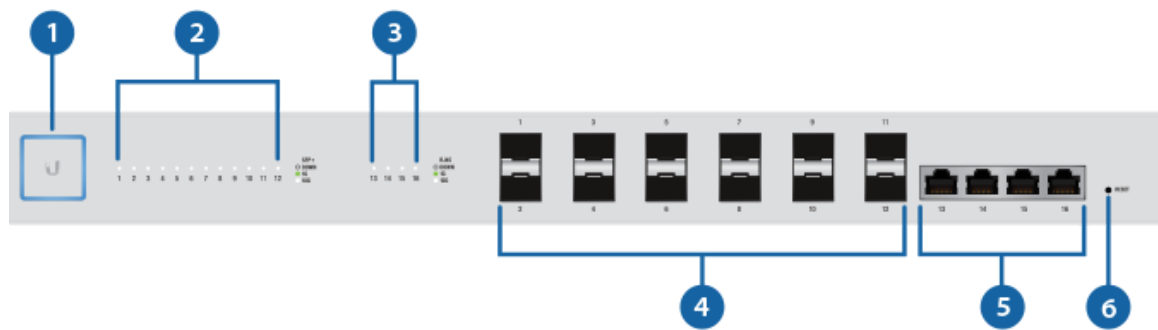


Note: Although the cabling can be located outdoors, the UniFi Switch itself should be housed inside a protective enclosure.

System Requirements

- Linux, Mac OS X, or Microsoft Windows 7/8/10
- Java Runtime Environment 1.6 (1.8 or newer recommended)
- Web Browser: Google Chrome (Other browsers may have limited functionality.)

Hardware Overview



1 System LED

[Click here](#) for detailed descriptions.

2 SFP+ Speed/Link/Act LED (Ports 1 - 12)

Off	No Link
Green	Solid: 1 Gbps Link Established Flashing: Activity
White	Solid: 10 Gbps Link Established Flashing: Activity

3 RJ45 Speed/Link/Act LED (Ports 13 - 16)

Off	No Link
Green	Solid: 1 Gbps Link Established Flashing: Activity
White	Solid: 10 Gbps Link Established Flashing: Activity

4 SFP+ (Ports 1 - 12)

Hot-swappable SFP+ ports support 1 Gbps and 10 Gbps connections.

5 RJ45 (Ports 13 - 16)

RJ45 ports support 1 Gbps and 10 Gbps Ethernet connections.

6 Reset Button

This button serves two functions for the UniFi Switch:

- Restart Press and release the Reset button quickly.

Console Port



7 Console Port

RJ45 serial console port for Command Line Interface (CLI) management. Use an RJ45-to-DB9, serial console cable, also known as a rollover cable, to connect the Console port to your computer. Then configure the following settings as needed:

- Baud rate 115200
- Data bits 8
- Parity NONE
- Stop bits 1
- Flow control NONE

8 DC Input

The 48/24VDC input can connect a redundant or stand-alone DC power source (not included) with minimum power: 56W, 57 to 20V.



Note: You can use the redundant DC power source as a hot spare; if the internal AC/DC power supply no longer provides power, the UniFi Switch will switch to the DC power source without interrupting its operation.

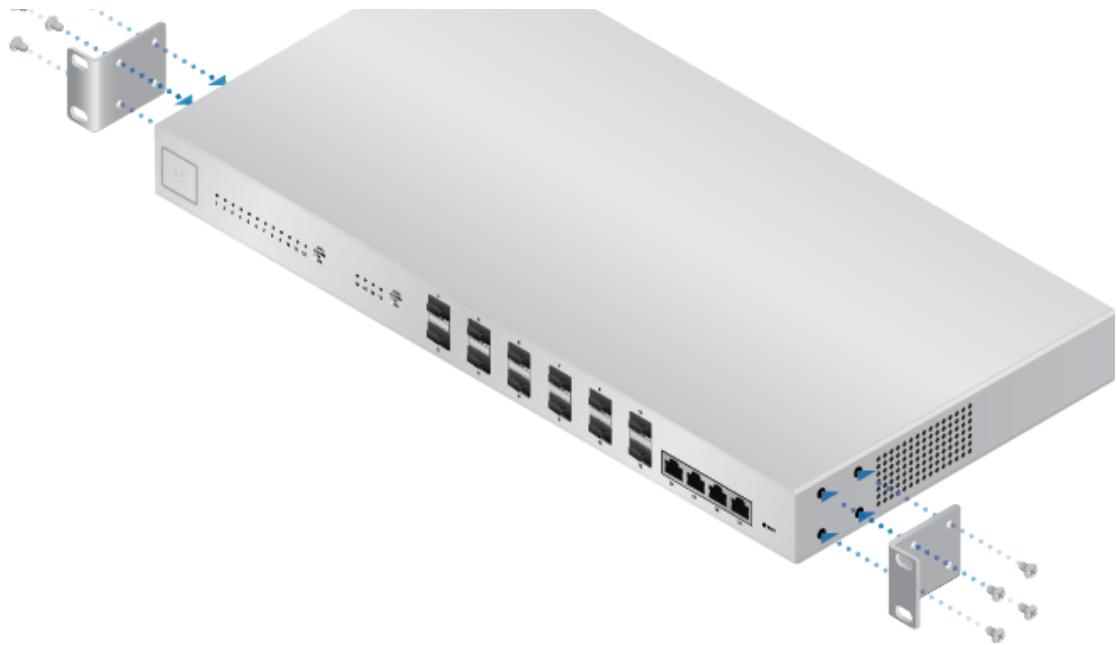
9 Power Port

Connect the included Power Cord to the Power port.

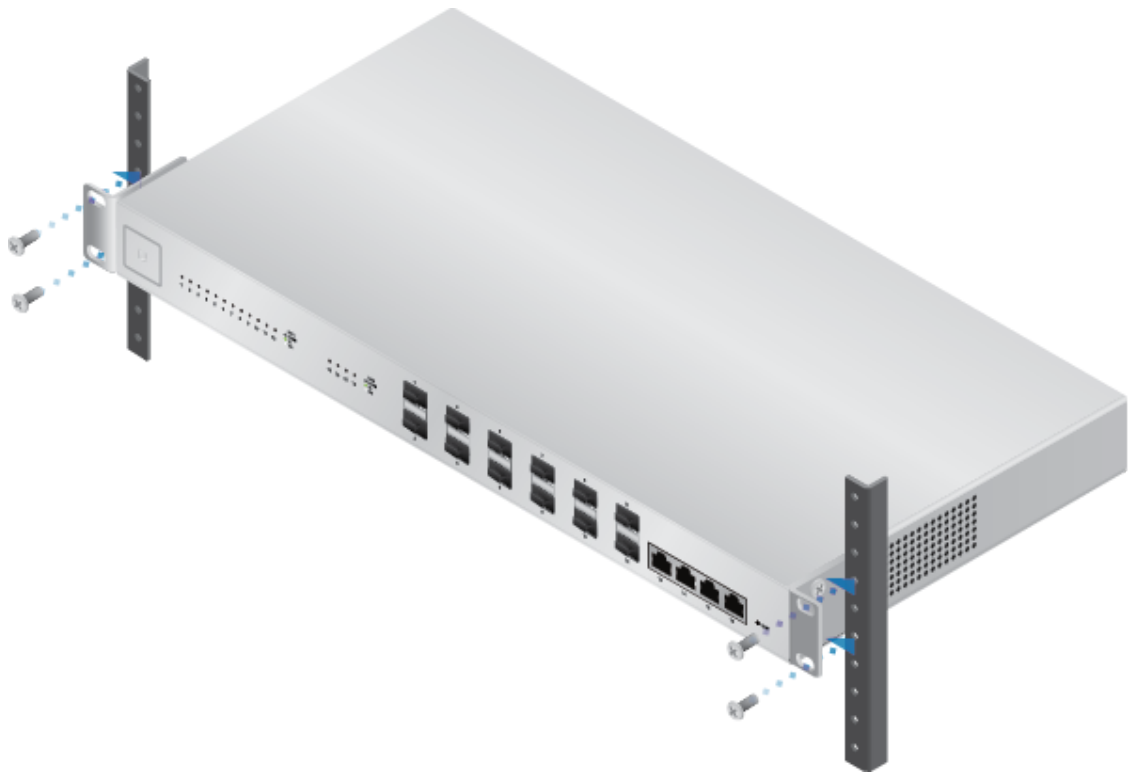
Hardware Installation

Mounting in a Rack (Optional)

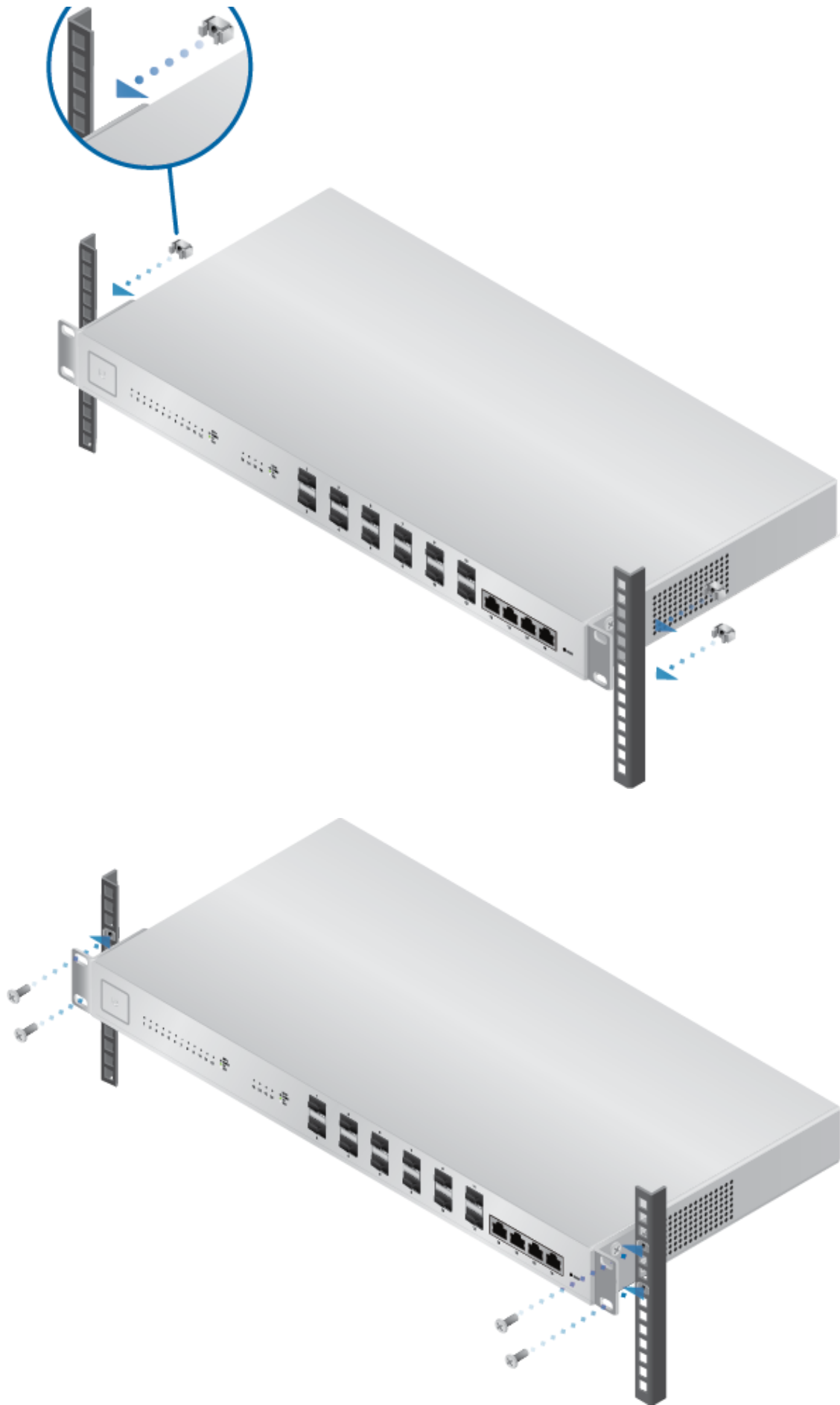
1.



2.



OR

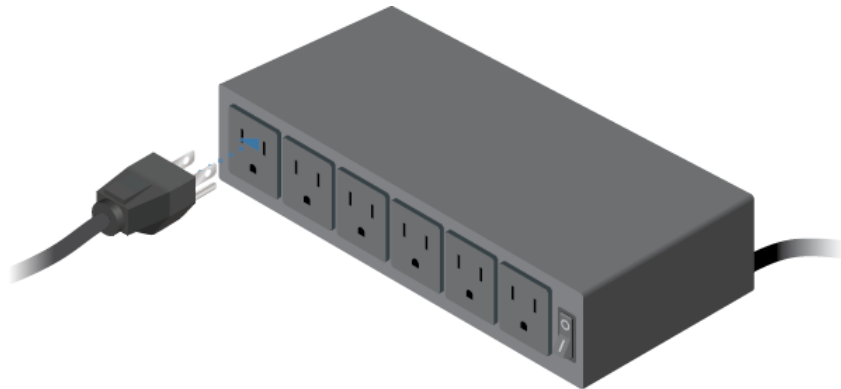


Connecting Power

1.



2.



Connecting SFP+

1.



2.



3.



For information about compatible fiber SFP+ modules, visit: community.ubnt.com/unifi

Connecting RJ45

1.



2.



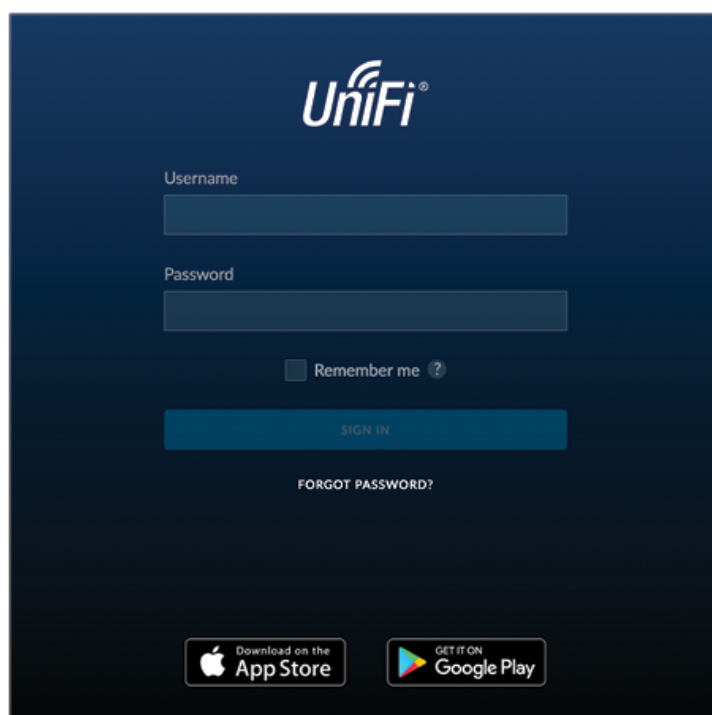
Software Installation

Download and install the latest version of the UniFi Controller software at ui.com/download/unifi and follow the on-screen instructions.



Note: If you already have UniFi Controller v5.4 or higher installed, go to the section, Adopting the UniFi Switch.

After you have installed the software and run the UniFi Installation Wizard, a login screen will appear for the UniFi Controller management interface. Enter the username and password that you created and click Sign In.

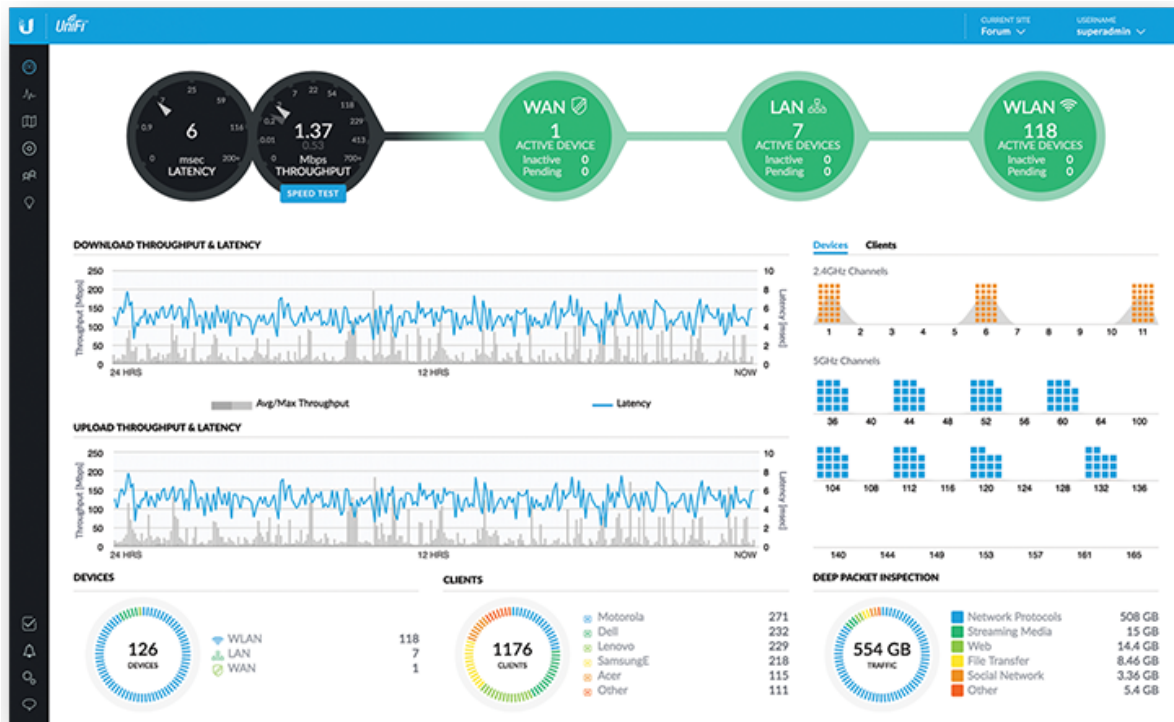


To adopt the UniFi Switch, proceed to the section, Adopting the UniFi Switch.

For information on configuring and using the UniFi Controller software, refer to the User Guide on the website: ui.com/download/unifi

Adopting the UniFi Switch

1. From the UniFi Controller dashboard, click Devices in the left menu bar.



2. Locate the UniFi Switch in the list of devices under the Model column. Click Adopt.

DEVICE NAME	IP ADDRESS	STATUS	MODEL	VERSION	UPTIME	ACTIONS
192.168.1.1	192.168.1.1	PENDING ADOPTION	UniFi Switch-8	4.3.11.4852927	55m 43s	ADOPT
Atmic-US-16-150W	192.168.1.233	CONNECTED	UniFi Switch 16 POE-150W	3.5.1.4088	10d 18h 45m 7s	LOCATE RESTART
Downstairs-US-48-500W	192.168.1.191	CONNECTED	UniFi Switch 48 POE-500W	3.5.1.4088	4d 21h 55m 15s	LOCATE RESTART
Workshop-US-48-750W	192.168.1.246	CONNECTED	UniFi Switch 48 POE-750W	3.5.1.4088	3d 21h 12m 13s	LOCATE RESTART
Rack-US-48-750W	192.168.1.6	CONNECTED	UniFi Switch 48 POE-750W	3.5.1.4088	4d 21h 55m 29s	LOCATE RESTART
PatchPanel-US-8-150W	192.168.1.204	CONNECTED	UniFi Switch 8 POE-150W	3.5.1.4088	1d 8h 10m 17s	LOCATE RESTART
AC-Broadcom	192.168.1.231	CONNECTED	UniFi AP-AC v2	3.5.1.4088	4d 21h 53m 4s	LOCATE RESTART
AC-LITE	192.168.1.162	CONNECTED	UniFi AP-AC-Lite	3.6.1.3553	3d 21h 17m 32s	LOCATE RESTART
AC-LR-Basement	192.168.1.137	CONNECTED	UniFi AP-AC-LR	3.6.1.3553	4d 21h 54m 6s	LOCATE RESTART
44:d9:e7:02:04:33	192.168.1.197	CONNECTED	UniFi AP-AC-Lite	3.6.1.3553	3d 21h 1m 32s	LOCATE RESTART
44:d9:e7:02:04:44	192.168.1.198	CONNECTED	UniFi AP-AC-LR	3.6.1.3553	3d 19h 26m 8s	LOCATE RESTART
AC-Pro-Basement	192.168.1.7	CONNECTED	UniFi AP-AC-Pro Gen2	3.6.1.3553	4d 21h 53m 32s	LOCATE RESTART
44:d9:e7:02:02:89	192.168.1.200	CONNECTED	UniFi AP-AC-Pro Gen2	3.6.1.3553	9d 17h 59m 46s	LOCATE RESTART
Prototype1 UAP-AC-Pro	192.168.1.182	CONNECTED (JOB PENDING)	UniFi AP-AC-Pro Gen2	3.6.1.3553	1d 8h 9m 12s	LOCATE RESTART
AC-Pro-Crawlspace	192.168.1.134	CONNECTED	UniFi AP-AC-Pro Gen2	3.6.1.3553	3d 21h 19m 14s	LOCATE RESTART
Timeout	192.168.1.235	CONNECTED	UniFi AP-in Wall	3.5.1.4088	1d 8h 9m 14s	LOCATE RESTART
Living	192.168.1.136	CONNECTED	UniFi AP-in Wall	3.5.1.4088	1d 8h 8m 36s	LOCATE RESTART
Sitting	192.168.1.124	CONNECTED	UniFi AP-in Wall	3.5.1.4088	1d 8h 8m 15s	LOCATE RESTART
Master	192.168.1.158	CONNECTED	UniFi AP-in Wall	3.5.1.4088	1d 8h 8m 18s	LOCATE RESTART
Loft	192.168.1.139	CONNECTED	UniFi AP-in Wall	3.5.1.4088	1d 8h 8m 32s	LOCATE RESTART
Basement	192.168.1.140	CONNECTED	UniFi AP-in Wall	3.5.1.4088	1d 8h 8m 25s	LOCATE RESTART
24:a4:3c:94:2f:d9	192.168.1.122	CONNECTED	UniFi AP-Outdoor+	3.5.1.4088	3d 17h 22m 54s	LOCATE RESTART
Pro-roamtest2	192.168.1.164	CONNECTED	UniFi AP-Pro	3.5.1.4088	1d 8h 20m 25s	LOCATE RESTART
Pro-roamtest	192.168.1.141	CONNECTED	UniFi AP-Pro	3.5.1.4088	3d 21h 16m 49s	LOCATE RESTART

3. The System LED on the UniFi Switch will turn blue to confirm that it has been successfully adopted.

US-16-XG Quick Start Guide

US-16-XG	
Dimensions	443 x 221 x 43 mm (17.44 x 8.70 x 1.69")
Weight	2.67 kg (5.89 lb)
With Mount Brackets	2.76 kg (6.04 lb)
Total Non-Blocking Line Rate	160 Gbps
Max. DC Power Consumption	36W (excludes SFP/SFP+ modules)
Power Method	
AC	100-240VAC/50-60 Hz, Universal Input
DC	48VDC/24VDC
Power Supply	AC/DC, Internal, 56W DC
Supported Voltage Range	100 to 240VAC 57 to 20VDC
Rack-Mount	Yes, 1U High
ESD/EMP Protection	Air: ± 24 kV, Contact: ± 24 kV
Shock and Vibration	ETSI300-019-1.4 Standard
LEDs Per Port	
SFP+ Data Ports	Speed/Link/Activity
RJ45 Data Ports	Speed/Link/Activity
Interfaces	
Networking Interfaces	(12) 1/10 Gbps SFP+ Ethernet Ports (4) 1/10 Gbps RJ45 Ethernet Ports
Management Interface	(1) RJ45 Serial Port, Ethernet In-Band
Operating Temperature	-5 to 40° C (23 to 104° F)
Operating Humidity	5 to 95% Noncondensing
Certifications	CE, FCC, IC

Safety Notices

1. Read, follow, and keep these instructions.
2. Heed all warnings.
3. Only use attachments/accessories specified by the manufacturer.



WARNING: Failure to provide proper ventilation may cause fire hazard. Keep at least 20 mm of clearance next to the ventilation holes for adequate airflow.



WARNING: To reduce the risk of fire or electric shock, do not expose this product to rain or moisture.



WARNING: Do not use this product in location that can be submerged by water.

WARNING: Avoid using this product during an electrical storm. There may be a remote risk of

Electrical Safety Information

1. Compliance is required with respect to voltage, frequency, and current requirements indicated on the manufacturer's label. Connection to a different power source than those specified may result in improper operation, damage to the equipment or pose a fire hazard if the limitations are not followed.
2. There are no operator serviceable parts inside this equipment. Service should be provided only by a qualified service technician.
3. This equipment is provided with a detachable power cord which has an integral safety ground wire intended for connection to a grounded safety outlet.
 - a. Do not substitute the power cord with one that is not the provided approved type. Never use an adapter plug to connect to a 2-wire outlet as this will defeat the continuity of the grounding wire.
 - b. The equipment requires the use of the ground wire as a part of the safety certification, modification or misuse can provide a shock hazard that can result in serious injury or death.
 - c. Contact a qualified electrician or the manufacturer if there are questions about the installation prior to connecting the equipment.
 - d. Protective earthing is provided by Listed AC adapter. Building installation shall provide appropriate short-circuit backup protection.
 - e. Protective bonding must be installed in accordance with local national wiring rules and regulations.

Limited Warranty

ui.com/support/warranty

The limited warranty requires the use of arbitration to resolve disputes on an individual basis, and, where applicable, specify arbitration instead of jury trials or class actions.

Compliance

FCC

Changes or modifications not expressly approved by the party responsible for compliance could void the user's authority to operate the equipment.

This device complies with Part 15 of the FCC Rules. Operation is subject to the following two conditions.

1. This device may not cause harmful interference, and
2. This device must accept any interference received, including interference that may cause undesired operation.

This equipment has been tested and found to comply with the limits for a Class A digital device, pursuant to Part 15 of the FCC Rules. These limits are designed to provide reasonable protection against harmful interference when the equipment is operated in a commercial environment. This equipment generates, uses, and can radiate radio frequency energy and, if not installed and used in accordance with the instruction manual, may cause harmful interference to radio communications. Operations of this equipment in a residential area is likely to cause harmful interference in which case the user will be required to correct the interference at his own expense.

ISED Canada

CAN ICES-3(A)/NMB-3(A)

Australia and New Zealand

Warning: This equipment is compliant with Class A of CISPR 32. In a residential environment this

CE Marking

CE marking on this product represents the product is in compliance with all directives that are applicable to it.



WEEE Compliance Statement

Declaration of Conformity

Online Resources

